

# cowdroy



## **GLASS TRACK SYSTEMS**

10mm Glass Track | 6mm Glass Track | Sashless window track | Cabinet track

# BALL BEARING

SLIDING DOOR SYSTEM | DOUBLE TRACK | 21KG PER WINDOW

## TECHNICAL SPECIFICATIONS

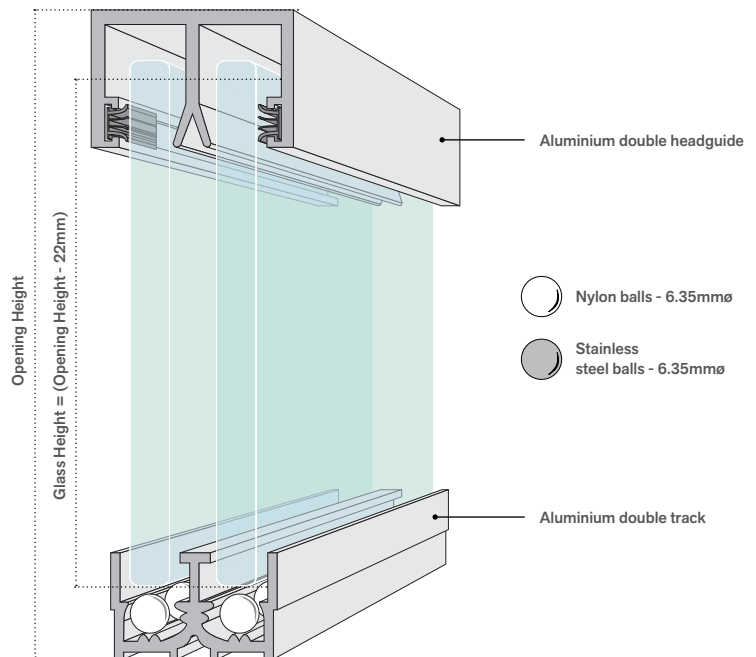
<b>Max. Door Weight:</b>	21 kg per panel
<b>Max. Door Size:</b>	1.40m <sup>2</sup>
<b>Max. Door Height:</b>	1220mm
<b>Glass Height:</b>	Opening height - 22mm
<b>Glass Width:</b>	Half opening width + 25mm <i>(Will give a 50mm overlap)</i>

### GLASS PREPARATION DETAILS:

Cowdroy recommends all glass have polished edges and rounded or tipped corners.

The **Ball Bearing** double sliding door system is a simple glass door system utilising free-running ball bearings inside the bottom track and is designed for simple installation. Used in applications such as cabinets, vanities and small internal windows, the **Ball Bearing** sliding door system is only to 2 door applications but may also be used in multiples of 2 by running multiple tracks next to each other.

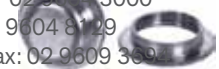
CODE	DESCRIPTION
TT02012	Headguide 4500mm C/A w/pile
TT41512	Track 4500mm C/A (without balls)
TT07400	Nylon Balls - pack of 440 (half track)
TT07700	St/Steel Balls - pack of 440 (half track)
F60700	Pin Projection Lock Satin Chrome K/A
F60710	Pin Projection Lock Satin Chrome K/D
TT07200	Optional Finger Pull - 21mm diam hole



Pin Projection Lock

### HEAD OFFICE SYDNEY

Unit 3, 42-44 Redfern St,  
Wetherill Park 2164  
Phone: 02 9571 3000  
Fax: 02 9604 8129  
Sales fax: 02 9609 3692



Finger Pull

# PLASTIC TRACK

DOUBLE TRACK FOR 6MM GLASS OR MIRROR PANELS

## TECHNICAL SPECIFICATIONS

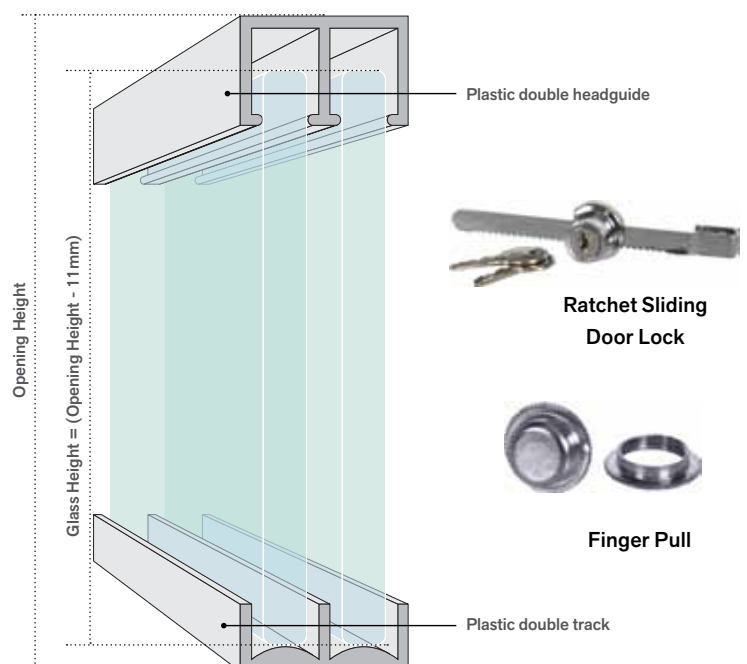
<b>Max. Door Weight:</b>	6kg per panel
<b>Max. Door Size:</b>	0.56m <sup>2</sup>
<b>Max. Door Height:</b>	760mm
<b>Glass Height:</b>	Opening height - 11mm
<b>Glass Width:</b>	Half opening width + 10mm <i>(Will give a 20mm overlap)</i>

### GLASS PREPARATION DETAILS:

All glass **MUST** have polished edges and all corners rounded to a 10mm radius.

The **Plastic Track** double sliding door track is a basic sliding panel system which operates without the use of a rolling mechanism. Panels run simply on the arc of the bottom track while the plastic design reduces friction to allow movement. The **Plastic Track** is very easy to install and is ideal for small cabinets and vanities with infrequent use.

CODE	DESCRIPTION
P02624	1200mm wide set for 2 doors - Brown
P02626	1200mm wide set for 2 doors - White
TT08600	Ratchet Sliding Door Lock
TT07900	Optional Finger Pull - 21mm diam hole



Ratchet Sliding Door Lock



Finger Pull

# MKII SASHLESS

SLIDING WINDOW SYSTEM | DOUBLE TRACK | 58KG PER WINDOW

## DOUBLE TRACK FOR 6MM FLOAT & 6.38MM LAMINATE GLASS PANELS

### TECHNICAL SPECIFICATIONS

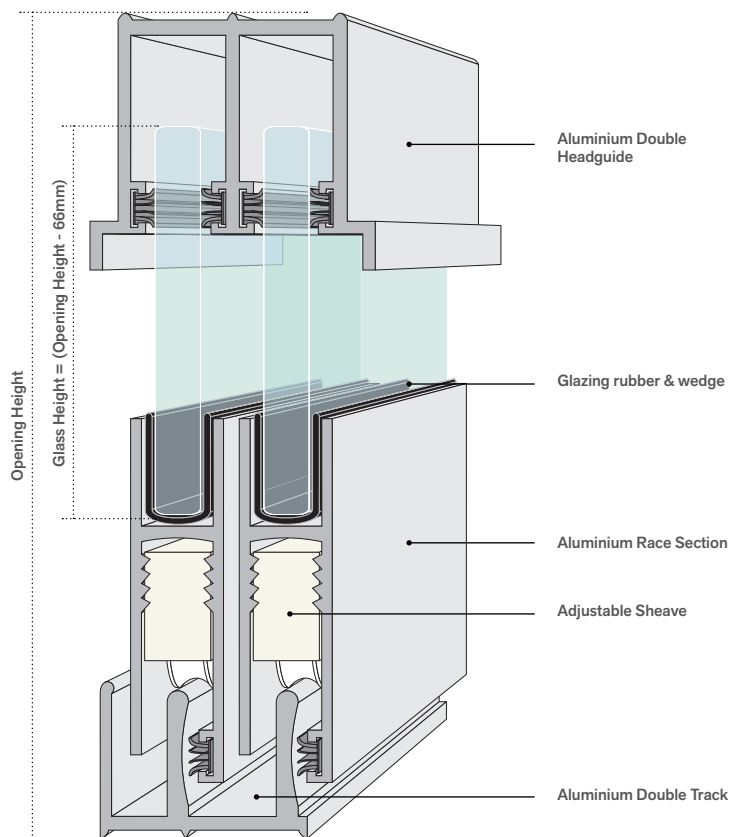
<b>Max. Door Weight:</b>	58kg per panel
<b>Max. Door Size:</b>	3.25m <sup>2</sup>
<b>Max. Door Height:</b>	1525mm
<b>Glass Height:</b>	Opening height - 66mm
<b>Glass Width:</b>	Half opening width + 50mm <i>(Will give a 100mm overlap)</i>

### GLASS PREPARATION DETAILS:

Cowdroy recommends all glass have polished edges and rounded or tipped corners.

The **MKII Sashless** window system is designed for maximum visibility. With all framework contained to the outer edges the result of an unobtrusive view and maximum light. It is best suited for use in partially covered or protected areas (eg. under awnings or eaves) such that protection is afforded against driving wind and rain. Also ideal for use on large cabinets, reception windows and display windows.

The **MKII Sashless** window system is best suited to 2 panel applications but may also be used for 4 door applications by running multiple panels on each track or multiple tracks.



CODE	DESCRIPTION
TT02212	Headguide 4500mm C/A with pile
TT05312	Track 4500mm C/A
TT05212	Race 4500mm C/A with pile
TT05406	Nylon End Cap for Race section White
TT05408	Nylon End Cap for Race section Black
TT08700	Glazing Rubber 20m Roll Black
TT08900	Glazing Wedge 40m Roll Clear
TT52000	Adjustable Roller with S/S wheel
F60407	Reversible Plunger Lock Chrome K/A
F60417	Reversible Plunger Lock Chrome K/D
TP00600	PVC Weather Strip 30m Roll
TT12912	Mullion Channel 4500mm C/A w/insert
TT13012	Alum. Edge Brace 4500mm C/A w/pile
TT13511	PVC Edge Brace 4500mm C/A w/pile



Adjustable Sheave



Reversible Plunger Lock



Weather Strip



Mullion Channel



Weather Edge Brace



Vertical Edge Brace



Nylon End Plates

# 6MM GLASS TRACKS

SLIDING DOOR SYSTEM | DOUBLE & SINGLE TRACK | 45KG PER DOOR

## DOUBLE TRACK FOR 6MM FLOAT & 6.38MM LAMINATE GLASS PANELS

### TECHNICAL SPECIFICATIONS

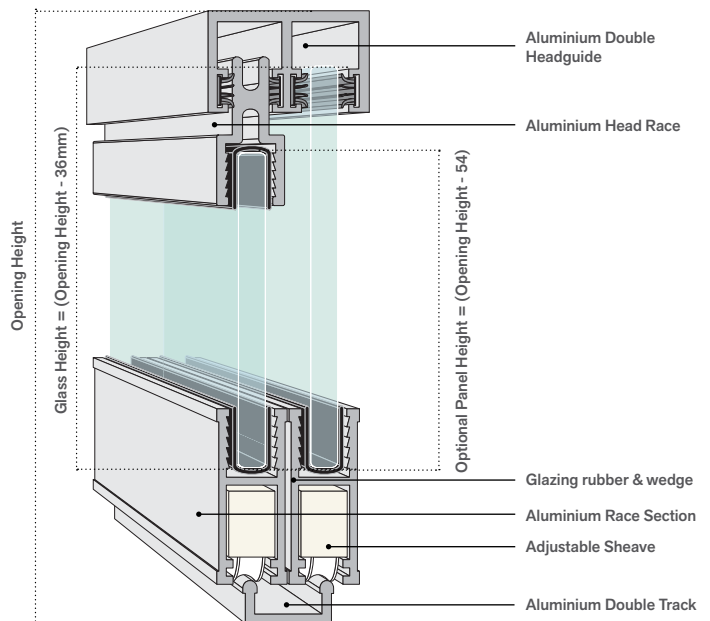
<b>Max. Door Weight:</b>	45kg per panel
<b>Max. Door Size:</b>	3.78m <sup>2</sup>
<b>Max. Door Height:</b>	1800mm
<b>DOUBLE TRACK:</b>	
<b>Glass Height:</b>	Opening height - 36mm
<b>Glass Width:</b>	Half opening width + 25mm <i>(Will give a 50mm overlap)</i>
<b>SINGLE TRACK:</b>	
<b>Glass Height:</b>	Opening height - 42mm
<b>Glass Width:</b>	Nominal

### GLASS PREPARATION DETAILS:

Cowdroy recommends all glass have polished edges and rounded or tipped corners.

The **Roller Bearing 6** double sliding door system is a versatile glass door system which is slimline in design for maximum visibility yet strong enough to carry 45kg glass panels. Ideal for use in cabinets and vanities as well as small reception windows and display windows.

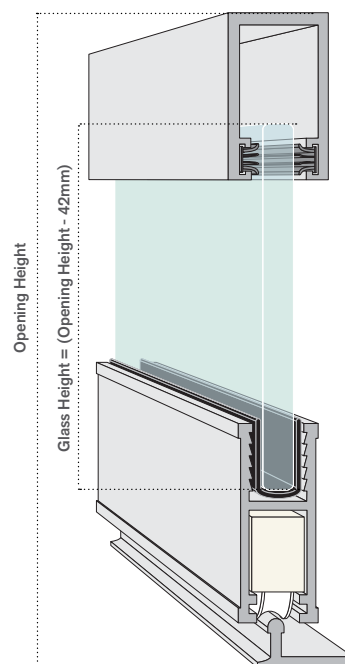
The **Roller Bearing 6** sliding door system is best suited to 2 door applications but may also be used for 3 or 4 door applications by running multiple panels on each track or multiple tracks.



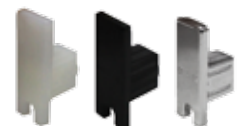
## SINGLE TRACK FOR 6MM FLOAT & 6.38MM LAMINATE GLASS PANELS

The **Roller Bearing 6** single sliding door system is a great compliment to the double track version. It features all of the same characteristics but in a single track. Ideal for use as a third door or as a stand alone panel for single access requirements. It may also be used for small cavity style windows and access openings.

CODE	DESCRIPTION
TT02112	Double Headguide 4500mm C/A w/pile
TT02312	Single Headguide 4500mm C/A w/pile
TT04712	Double Track 4500mm C/A
TT41652	Single Track 5000mm C/A
TT04812	Race 4500mm C/A
TT04606	Nylon End Cap for Race section White
TT04608	Nylon End Cap for Race section Black
TT08700	Glazing Rubber 20m Roll Black
TT08900	Glazing Wedge 40m Roll Clear
TT50000	Adjustable Roller with S/S wheel
F60407	Reversible Plunger Lock Chrome K/A
F60417	Reversible Plunger Lock Chrome K/D
TT02412	Optional Head Race 4500mm C/A



Adjustable Sheaves



Nylon End Plates



Reversible Plunger Lock

Australian Patent #495883

# 10MM GLASS TRACK

SLIDING DOOR SYSTEM | GLASS TRACK | 50KG PER DOOR

## DOUBLE TRACK FOR 6MM FLOAT & 6.38MM LAMINATE GLASS PANELS

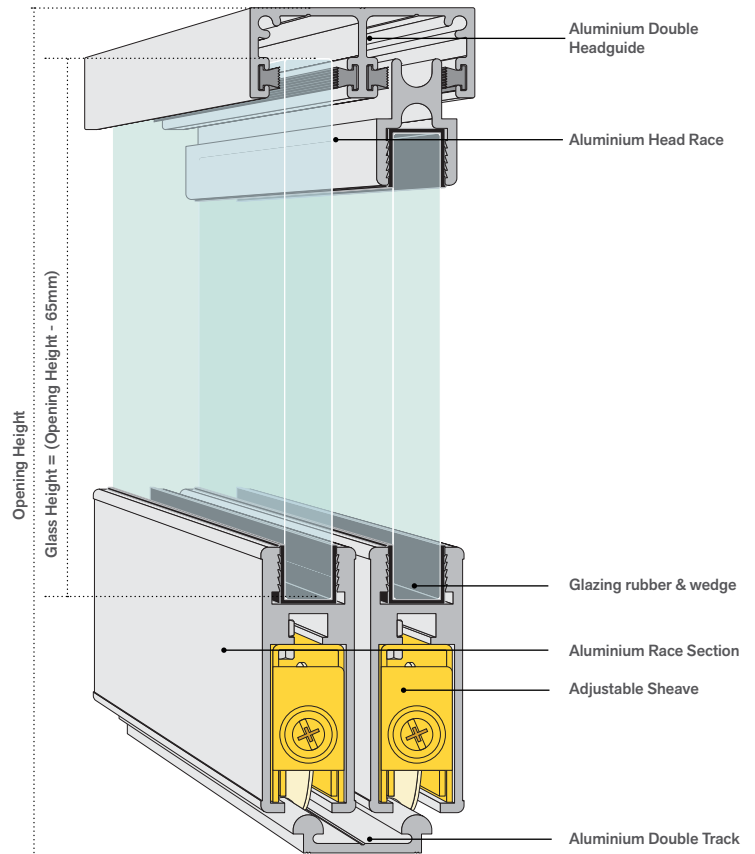
### TECHNICAL SPECIFICATIONS

<b>Max. Door Weight:</b>	200kg per panel
<b>Max. Door Size:</b>	3.35m <sup>2</sup>
<b>Max. Door Height:</b>	2400mm
<b>Glass Height:</b>	Opening height - 65mm
<b>Glass Width:</b>	Half opening width + 50mm (Will give a 100mm overlap)

### GLASS PREPARATION DETAILS:

Cowdroy recommends all glass have polished edges and rounded or tipped corners.

The **Roller Bearing 10** double sliding door system is an adjustable glass door system which is slimline in design for maximum visibility yet robust enough to carry large 200kg glass panels. Ideal for use in large cabinets and vanities, reception windows and display windows, the **Roller Bearing 10** sliding door system is best suited to 1 and 2 door applications but may also be used for 3 or 4 door applications by running multiple panels on each track or multiple tracks.



CODE	DESCRIPTION
TT02512	Headguide 4500mm C/A w/pile inserts
TT05712	Track 4500mm C/A
TT05812	Race 4500mm C/A
TT05608	Nylon End Cap for Race section Black
TT08700	Glazing Rubber 20m Roll Black
P51000	Adjustable Sheave Pack of 2 (50kg per door)
P51500	Double Wheel Assembly Pack of 2 (200kg per door)
TT02912	Optional Head Race 4500mm C/A
F61012	Sliding Window Bolt Lock Keyed Alike



Adjustable Sheave



Nylon End Plate



Double Wheel Assembly



Sliding Window Bolt  
(Image indicative only,  
actual lock may vary slightly)

Cowdroy is an Australian company supplying industry leading door and window hardware to retail, trade and architectural outlets.

Established in 1890, Cowdroy specialises in door tracking systems, window and door seals, replacement wheels & rollers, sliding glass cabinet tracking systems and door hardware.

For all our product information visit the Cowdroy website at [www.cowdroy.com.au](http://www.cowdroy.com.au)

**HEAD OFFICE SYDNEY**

Unit 3, 42-44 Redfern St,  
Wetherill Park 2164  
Phone: 02 9604 3000  
Fax: 02 9604 8129  
Sales fax: 02 9609 3694

**Melbourne**

U1/34-36 Deans Crt,  
Dandenong Sth, Vic 3175  
Ph: (03) 9587 3195  
Fax: (03) 9587 3196

**Perth**

2 Meares Way  
Canning Vale WA 6155  
Ph: (08) 9248 4133  
Fax: (08) 9248 4933

**Hobart**

ACCESS HARDWARE Pty Ltd.  
42 Invermay Road, Invermay,  
Launceston. 7248  
Phone: (03) 6323 5611  
Fax: (03) 6331 2733

**Brisbane**

U1/90 Pritchard Rd,  
Virginia, QLD 4014  
Ph: (07) 3865 7637  
Fax: (07) 3865 7645

**Adelaide**

Unit 2 / 52 Wodonga St  
Beverley SA 5009  
Ph: (08) 8443 3370  
Fax: (08) 8443 3066

**Townsville**

U1/42 Carmel St,  
Garbutt, QLD 4814  
Ph: (07) 4779 5122  
Fax: (07) 4725 5495

**Auckland NZ**

18 Kerwyn Ave, East Tamaki  
Phone: (09) 274 7279  
Fax: (09) 274 4453

**Christchurch NZ**

13B Parkhouse Rd, Wigram  
Phone: (03) 943 2060  
Fax: (03) 943 2061

