

# SIGE KITCHEN STORAGE SOLUTIONS

Premium home storage products



wilson  
&bradley

# CONTENTS

---

4. SIGE

---

5. SIGE Valore

---

14. SIGE Materia EVO

---

19. SIGE Materia

---

24. SIGE Infinity Plus

---

# SIGE KITCHEN STORAGE SOLUTIONS

---

WILSON & BRADLEY

In this brochure you will find the latest range of SIGE kitchen storage solutions available at Wilson & Bradley.

Available in a range of styles, and with four ranges to choose from, the SIGE range of kitchen storage solutions are designed to provide years of reliable service throughout the home.



wilson  
&bradley



Code: SME4CP90R

# SIGE



**Established in Italy, SIGE has been designing, developing and supplying manufacturers with wire ware for the kitchen and bathroom industry since 1969.**

Distributed by Wilson & Bradley, SIGE storage solutions are easy to install and are designed to provide years of reliable service throughout the home.

With a strong focus on ensuring the best quality, the SIGE wire ware range builds further upon Wilson & Bradley's brand by offering a range of innovative storage benefits, premium design finishes and the latest soft close technology.

**SIGE offers 4 different storage solutions for your home:**

- **SIGE Materia EVO** – Modern glass insert wire ware
- **SIGE Materia** – Modern minimalistic wire ware
- **SIGE Infinity Plus** – Soft-close chrome wire ware
- **SIGE Valore**

**Key features:**

- Easy to install and assemble.
- Perfect for maximising storage.
- Designed to assist with the organisation of your kitchen.
- Available in both left-hand and right-hand applications.
- Designed to suit a variety of cabinet spaces.
- Life-cycle tested to ensure ongoing dependable quality.

Visit our website to find out more about the SIGE storage solutions range:

[www.wilbrad.com.au](http://www.wilbrad.com.au)

or call us on: **1800 633 507.**



Code: SVPOB450

# SIGE VALORE



**The SIGE Valore range features a new elegant contemporary look and includes a variety of storage solutions including pull-outs, corner units and pantries designed to make the most of available heights and spaces.**

## **Key features:**

- Chrome finish
- Easy to assemble and secure in place
- Stable and rapid sliding motion
- Strong and sturdy construction

## **Why SIGE?**

- Made in Italy
- Easy to install
- Life-cycle tested to ensure ongoing and dependable quality

View the entire SIGE Valore range and find out more on our website: [www.wilbrad.com.au](http://www.wilbrad.com.au) or call **1800 633 507**.



# PULL-OUT BASKETS (BOTTLE RACKS)

## JOLLY BASKET (150MM & 200MM)

- Available for use in 150mm and 200mm external cabinet width
- Features full extension SIGE slides with soft close runners
- Easy to install
- Chrome finish
- Includes two baskets
- Weight capacity: 10kg

### Technical Details

CODE	▶◻◀	WIDTH	DEPTH	HEIGHT	MOUNT
SVBSL150	150mm	110mm	450mm	520mm	Left hand
SVBSL200	200mm	160mm	500mm	520mm	Left hand



## JOLLY BASKET (300MM)

- Available for use in 300mm external cabinet width
- Features full extension SIGE slides with soft close runners
- Easy to install
- Chrome finish
- Includes two baskets
- Weight capacity: 30kg

### Technical Details

CODE	▶◻◀	WIDTH	DEPTH	HEIGHT	MOUNT
SVBSL300	300mm	260mm	500mm	520mm	Bottom Fixed



# UNDER SINK BASKETS

## REVERSIBLE BASKET

- Available for use in 300mm and 450mm external cabinet width
- Features full extension SIGE slides with soft close runners
- Complete with plastic base tray & bottle separators
- Easy to install
- Chrome finish
- Weight capacity: 30kg

### Technical Details

CODE	►◻◄	WIDTH	DEPTH	HEIGHT	MOUNT
<b>SVRBS300</b>	300mm	230mm	500mm	440mm	Bottom Fixed
<b>SVRBS450</b>	450mm	380mm	500mm	440mm	Bottom Fixed



## WIRE UNDER SINK BASKET

- To suit 900mm cabinet
- Features full extension SIGE slides with soft close runners
- U-shaped design to fit around sink pipes
- Easy to install
- Chrome finish
- Weight capacity: 10kg

### Technical Details

CODE	►◻◄	WIDTH	DEPTH	HEIGHT
<b>SVUSB900</b>	900mm	864mm	500mm	180mm



# CORNER UNITS

## HALF MOON BASKET

- To suit 900mm cabinet
- Includes two shelves
- Door or manual opening
- Ideal for corner base unit
- Easy to install
- Chrome finish
- Weight capacity: 15kg

**Components:** 2 x half moon baskets, fixing bracket & connection bracket

### Technical Details

CODE	►◻◄	WIDTH	DEPTH	HEIGHT
SVHMB900	900mm	760mm	390mm	100mm



## CORNER PULL-OUT BASKET

- To suit 900mm cabinet
- Includes four baskets: two door mounted and two internal baskets
- Available in left and right-hand application
- Weight capacity: 35kg

**Components:** Four baskets, basket frames, brackets, covers, joint, post connection, linking arm, hooks, mounts & bushes

### Technical Details

CODE	APPLICATION	►◻◄	WIDTH	DEPTH	HEIGHT
SVPC4900L	Left hand	900mm	860 - 1000mm	470 - 505mm	600mm
SVPC4900R	Right hand	900mm	860 - 1000mm	470 - 505mm	600mm





# PANTRY UNITS

## PULL-OUT PANTRY

- To suit 200mm cabinet
- System comes complete with five pull-out baskets, runners and brackets
- Features full extension SIGE slides with soft close technology
- Mounts to door with supplied brackets
- Chrome finish
- Weight capacity: 80kg

**Components:** Five baskets, top and bottom runners & brackets

### Technical Details

CODE	▶◻◀	WIDTH	DEPTH	HEIGHT
<b>SVPOT200</b>	200mm	150mm	500mm	1880 - 2180mm



Code: SVPOT200

# PANTRY UNITS

## PANTRY DRAWER

- Available for use with 450mm or 600mm external cabinet width
- Features full extension SIGE slides with soft close runners
- Easy to install
- Chrome finish
- Weight capacity: 30kg

**Components:** Basket, soft close runners, cover kit, spacers & cap

### Technical Details

CODE	▶◻◀	WIDTH	DEPTH	HEIGHT
SVPOB450	450mm	410mm	500mm	180mm
SVPOB600	600mm	560mm	500mm	180mm



# PULL-OUT PANTRY KITS

Each kit comes complete with five baskets, pantry frame and soft close runner and bracket set

**Components:** Five baskets, soft close runners, brackets & frame

### Technical Details

CODE	▶◻◀	WIDTH	DEPTH	HEIGHT
SVPP3G	300mm	230mm	505mm	1880 - 2180mm
SVPP4G	400mm	330mm	505mm	1880 - 2180mm
SVPP5G	500mm	430mm	505mm	1880 - 2180mm
SVPP6G	600mm	530mm	505mm	1880 - 2180mm



# COMPONENTS FOR PULL-OUT PANTRY

## PULL-OUT BASKETS

- Includes five wire bottom baskets
- For use with pantry frame, runner and bracket set
- Available in four sizes: 300mm, 400mm, 500mm and 600mm
- Chrome finish

### Technical Details

CODE	▶◻◀	WIDTH	DEPTH	HEIGHT
<b>SVB5300</b>	300mm	230mm	440mm	120mm
<b>SVB5400</b>	400mm	330mm	440mm	120mm
<b>SVB5500</b>	500mm	430mm	440mm	120mm
<b>SVB5600</b>	600mm	530mm	440mm	120mm

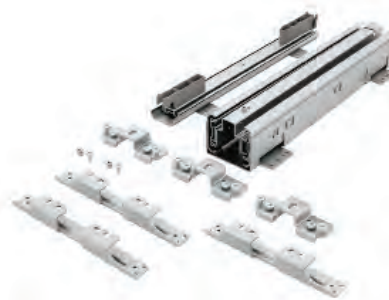


## PANTRY RUNNER KIT

- Includes full extension slides and door brackets
- Full extension soft close runners
- Chrome finish

### Technical Details

CODE	▶◻◀	WEIGHT CAPACITY
<b>SWPRS300</b>	300mm	120kg
<b>SWPRS400</b>	400mm	120kg
<b>SWPRS500</b>	500mm	120kg
<b>SWPRS600</b>	600mm	120kg



## PANTRY FRAME

- Adjustable height
- Baskets and runner kit must be purchased separately
- Weight capacity: 120kg
- Chrome finish

### Technical Details

CODE	FINISH	DEPTH	HEIGHT
<b>SWPFR</b>	Chrome	505mm	1880mm - 2180mm





Code: SMEKS945L

# MATERIA EVO



**Stepping away from the traditional chrome wire ware look, comes the SIGE Materia EVO range.**

Taking a selection of the most popular SIGE products, the Materia Evo range completely redesigns the traditional style to provide a modern contemporary feel with extremely clear lines and finishes not traditionally seen in kitchen storage solutions.

Available in Orion Grey finish with Silver Grey wooden bases as standard, the Materia Evo range delivers a stylish modern aesthetic throughout the kitchen.

## Key features:

- Designed with glass inserts to deliver a stylish modern aesthetic.
- Available in Orion Grey finish with Silver Grey wooden bases.
- Designed to assist with the organisation of your kitchen.
- Available in both left-hand and right-hand applications.
- Designed to suit a variety of cabinet spaces.
- Life-cycle tested to ensure ongoing dependable quality.
- Full extension soft-close runners.
- Easy to install and assemble.
- Can be retrofitted.

Visit our website to find out more about the SIGE Materia EVO range: [www.wilbrad.com.au](http://www.wilbrad.com.au) or call us on: **1800 633 507**.



# PULL OUTS

## SIDE MOUNT BOTTLE RACK

- Perfect to organise non-perishables or for use as a bottle rack.
- For use with 150mm external cabinet width
- Soft-close full extension runners
- Mounts to door with supplied brackets
- Includes spacers
- Left-hand application
- Orion Grey finish with silver grey base and glass inserts
- Weight capacity: 10kg

### Technical Details

CODE	▶◻◀	WIDTH	DEPTH	HEIGHT
<b>SMEBR150</b>	150mm	110mm	500mm	520mm



## BOTTOM MOUNT PULL OUT BASKET

- Available in two sizes
- Soft-close full extension runners
- Mounts to door with supplied brackets
- Orion Grey finish with silver grey base and glass inserts
- Weight capacity: 30kg

### Technical Details

CODE	▶◻◀	WIDTH	DEPTH	HEIGHT
<b>SMEBRB300</b>	300mm	260-268mm	500mm	520mm
<b>SMEBRB450</b>	450mm	410-418mm	500mm	520mm



## PANTRY DRAWER

- Available in two sizes
- Soft-close full extension runners
- Orion Grey finish with silver grey base and glass inserts
- Weight capacity: 30kg

### Technical Details

CODE	▶◻◀	WIDTH	DEPTH	HEIGHT
<b>SMEPD450</b>	450mm	450mm	500mm	100mm
<b>SMEPD600</b>	600mm	560-568mm	500mm	100mm



# PANTRY UNITS

## PULL OUT PANTRY

### BASKETS FOR PULL OUT PANTRY

- Includes five baskets
- Orion Grey finish with silver grey base and glass inserts
- Weight capacity: 120kg

#### Technical Details

CODE	▶◻◀	WIDTH	DEPTH	HEIGHT
<b>SMEPB300</b>	300mm	230mm	440mm	90mm
<b>SMEPB400</b>	400mm	330mm	440mm	90mm



### PANTRY RUNNER KIT

- Includes full extension slides and door brackets
- Full extension soft-close runners

#### Technical Details

CODE	▶◻◀	WEIGHT CAPACITY
<b>SWPRS300G</b>	300mm	120kg
<b>SWPRS400G</b>	400mm	120kg



### PANTRY FRAME

- Adjustable height
- Baskets and runner kit must be purchased separately
- Weight capacity: 120kg

#### Technical Details

CODE	DEPTH	HEIGHT	FINISH
<b>SWPFRG</b>	505mm	1880-2180mm	Orion Grey

### PULL OUT PANTRY KITS

- Kit comes complete with five baskets, pantry frame and soft close runner and bracket set

#### Technical Details

CODE	▶◻◀	WEIGHT CAPACITY
<b>SMEPP3</b>	300mm	120kg
<b>SMEPP4</b>	400mm	120kg

# PANTRY UNITS

## DOOR FOLLOW PANTRY

### BASKETS FOR DOOR FOLLOW PANTRY

- For use with SIGE Materia Evo door follow pantry
- Includes five baskets
- Orion Grey finish with silver grey base and glass inserts
- Weight capacity: 80kg
- Minimum height: 1880mm

#### Technical Details

CODE	▶◻◀	WIDTH	DEPTH	HEIGHT
<b>SMEDFPB30</b>	300mm	260mm	500mm	100mm
<b>SMEDFPB40</b>	400mm	360mm	500mm	100mm



### PANTRY FRAME AND BRACKET SET

- Baskets and runner kit must be purchased separately
- Weight Capacity: 60kg

#### Technical Details

CODE	▶◻◀	COLOUR
<b>SMDFPF30</b>	300mm	Orion Grey
<b>SMDFPF40</b>	400mm	Orion Grey



### DOOR FOLLOW PANTRY SLIDES

- Durable components
- Simple to install
- Allows for easy access

Code: **SMDFPS**

### DOOR FOLLOW PANTRY KITS

- Kit comes complete with five baskets, pantry frame and door follow pantry slides

#### Technical Details

CODE	▶◻◀	WEIGHT
<b>SMEDFP3</b>	300mm	60kg
<b>SMEDFP4</b>	400mm	60kg

# CORNER UNITS

## KIDNEY SHELVES

- Designed to fit onto existing shelves
- Available in left-hand and right-hand application
- Includes two shelves and fittings
- Orion Grey finish with silver grey base and glass inserts
- Weight capacity: 20kg per shelf

### Technical Details

CODE	APPLICATION	▶◻◀	WIDTH	DEPTH
<b>SMEKS945L</b>	Left Hand	900mm	450mm	500mm
<b>SMEKS945R</b>	Right Hand	900mm	450mm	500mm



## SIGE SOFT CLOSE KIT FOR KIDNEY SHELF

- Suits two shelves

**Code: SMKSSCK**



## CORNER PULL OUT

- Includes two door mounted baskets and two internal baskets
- Available in left-hand and right-hand application
- Soft-open and close action
- Orion Grey finish with silver grey base and glass inserts
- Includes corner mechanism
- Weight capacity (Internal): 20kg
- Weight capacity (Door Mounted): 15kg

### Technical Details

CODE	APPLICATION	▶◻◀	WIDTH	DEPTH	HEIGHT
<b>SME4CP90L</b>	Left Hand	900mm	860mm	505mm	600mm
<b>SME4CP90R</b>	Right Hand	900mm	860mm	505mm	600mm







Code: SMPD450

# SIGE MATERIA



**Featuring the same functionality and technology of the Materia EVO range, the SIGE Materia range combines superb functionality and technology with a beautiful minimalist design.**

With a strong focus on ensuring the best quality, the SIGE Materia range integrates soft-close technology that adds ease and functionality when in use and is life cycle tested to ensure longevity and consistent premium performance.

The Materia range offers a variety of storage solutions including pull-out pantries, bottle racks, corner units and kidney shelves to complement modern kitchen spaces.

## Key features:

- Available in Orion Grey finish with silver grey wooden bases.
- Designed to assist with the organisation of your kitchen.
- Full extension, soft-close runners.
- Available in both left-hand and right-hand applications.
- Suits a variety of cabinet spaces.

- Life-cycle tested to ensure ongoing dependable quality.
- Great visibility and designed for minimal cleaning.
- Full extension, soft-close runners.
- Easy to install and assemble.
- Can be retrofitted.

Visit our website to find out more about the SIGE Materia range [www.wilbrad.com.au](http://www.wilbrad.com.au) or call us on **1800 633 507**.

# PULL OUTS

## SIDE MOUNT BOTTLE RACK (LEFT HAND MOUNTED)

- Perfect to organise non-perishables or for use as a bottle rack.
- For use with 150mm external cabinet width
- Soft-close full extension runners
- Mounts to door with supplied brackets
- Includes spacers
- Includes two orion grey baskets with silver grey base
- Weight capacity: 12kg

### Technical Details

CODE	▶◻◀	WIDTH	DEPTH	HEIGHT
<b>SMBRS150</b>	150mm	110mm	500mm	520mm



## BOTTOM MOUNT PULL OUT BASKET

- Available in two sizes
- Soft-close full extension runners
- Mounts to door with supplied brackets
- Includes two orion grey baskets with silver grey base
- Weight capacity: 30kg

### Technical Details

CODE	▶◻◀	WIDTH	DEPTH	HEIGHT
<b>SMBRB300</b>	300mm	260-268mm	500mm	520mm
<b>SMBRB450</b>	450mm	410-418mm	500mm	520mm



## PANTRY DRAWER

- Available in three sizes
- Soft-close, full extension runners
- Allows for customisation - Choose how many drawers you require
- Pull out drawer perfect for use in pantry
- Orion grey with silver grey base
- Weight Capacity: 30kg

### Technical Details

CODE	▶◻◀	WIDTH	DEPTH	HEIGHT
<b>SMPD450</b>	450mm	450mm	500mm	100mm
<b>SMPD600</b>	600mm	560-568mm	500mm	100mm
<b>SMPD900</b>	900mm	860-868mm	500mm	100mm



# PANTRY UNITS

## PULL OUT PANTRY

- Includes five baskets
- For use in pantry with pantry frame and runner kit
- Five sizes available
- Orion grey with silver grey base
- Weight capacity: 120kg



### Technical Details

CODE	▶◻◀	WIDTH	DEPTH	HEIGHT
<b>SMPB300</b>	300mm	230mm	440mm	90mm
<b>SMPB400</b>	400mm	330mm	440mm	90mm
<b>SMPB450</b>	450mm	380mm	440mm	90mm
<b>SMPB500</b>	500mm	430mm	440mm	90mm
<b>SMPB600</b>	600mm	530mm	440mm	90mm



### Technical Details

CODE	▶◻◀	WEIGHT CAPACITY
<b>SWPRS300G</b>	300mm	120kg
<b>SWPRS400G</b>	400mm	120kg
<b>SWPRS450G</b>	450mm	120kg
<b>SWPRS500G</b>	500mm	120kg
<b>SWPRS600G</b>	600mm	120kg



## PANTRY RUNNER KIT

- Includes full extension slides and door brackets
- Full extension soft-close runners
- Orion grey finish

## PANTRY FRAME

- Adjustable height
- Baskets and runner kit must be purchased separately
- Weight capacity: 120kg



### Technical Details

CODE	DEPTH	HEIGHT	FINISH
<b>SWPFRG</b>	505mm	1880-2180mm	Orion Grey

## PULL OUT PANTRY KITS

- Kit comes complete with five baskets, pantry frame and soft close runner and bracket set

CODE	▶◻◀	WEIGHT
<b>SMP3</b>	300mm	120kg
<b>SMP4</b>	400mm	120kg
<b>SMP45</b>	450mm	120kg
<b>SMP5</b>	500mm	120kg
<b>SMP6</b>	600mm	120kg

# PANTRY UNITS

## DOOR FOLLOW PANTRY UNITS

- For use with SIGE Materia Door Follow pantry
- Orion grey finish with silver grey base
- Includes five baskets
- Weight capacity: 80kg
- Minimum height: 1880mm



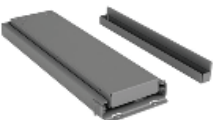
### Technical Details

CODE	▶◻◀	WIDTH	DEPTH	HEIGHT
<b>SMDFPB300</b>	300mm	260mm	500mm	100mm
<b>SMDFPB400</b>	400mm	360mm	500mm	100mm
<b>SMDFPB450</b>	450mm	410mm	500mm	100mm
<b>SMDFPB500</b>	500mm	460mm	500mm	100mm
<b>SMDFPB600</b>	600mm	560mm	500mm	100mm



## DOOR FOLLOW PANTRY FRAME AND BRACKET SET

- For use with SIGE Materia door follow pantry
- Baskets and runner kit must be purchased separately
- Weight capacity: 60kg



## DOOR FOLLOW PANTRY SLIDES

- Durable components
- Simple to install
- Allows for easy access

Code: **SMDFPS**

### Technical Details

CODE	▶◻◀
<b>SMDFPF30</b>	300mm
<b>SMDFPF40</b>	400mm
<b>SMDFPF45</b>	450mm
<b>SMDFPF50</b>	500mm
<b>SMDFPF60</b>	600mm

## SIGE MATERIA DOOR FOLLOW PANTRY KITS

- Kit comes complete with five baskets, pantry frame and pantry slides

CODE	▶◻◀	WEIGHT
<b>SMDFP3</b>	300mm	60kg
<b>SMDFP4</b>	400mm	60kg
<b>SMDFP45</b>	500mm	60kg
<b>SMDFP5</b>	400mm	60kg
<b>SMDFP6</b>	500mm	60kg



# CORNER UNITS

## CORNER PULL OUT

- Includes two door mounted baskets and two internal baskets
- Available in left-hand and right-hand application
- Orion grey finish with silver grey base
- Soft-open and close action
- Weight capacity (Internal): 20kg
- Weight capacity (Door Mounted): 15kg

### Technical Details

CODE	APPLICATION	►◻◄	WIDTH	DEPTH	HEIGHT
<b>SM4CP90L</b>	Left Hand	900mm	860mm	505mm	600mm
<b>SM4CP90R</b>	Right Hand	900mm	860mm	505mm	600mm



## KIDNEY SHELVES

- Designed to fit onto existing shelves
- Available in left-hand and right-hand application
- Includes two shelves
- Orion grey finish with silver grey base
- Weight capacity: 20kg per shelf

### Technical Details

CODE	APPLICATION	►◻◄	WIDTH	DEPTH
<b>SMKS945L</b>	Left Hand	900mm	450mm	500mm
<b>SMKS945R</b>	Right Hand	900mm	450mm	500mm



## SIGE SOFT CLOSE KIT FOR KIDNEY SHELF

- Suits two shelves

Code: **SMKSSCK**





Code: SW4CP900L

# INFINITY PLUS



**Boasting a unique modern design, the SIGE Infinity Plus range aims to enhance and redefine the kitchen which surrounds it.**

Achieving functionality on a number of levels, each product is easy to install and operate, making time spent in the kitchen a more efficient and pleasant experience.

SIGE uses only high-quality materials, such as the flat wire and its chromed finishes and teams this with clean solid bases to create a distinct finish.

Offering a variety of storage solutions including pull out pantries, bottle racks, corner units and kidney shelves, SIGE storage solutions complement the kitchen space.

## Key features:

- Designed to take advantage and makes full use of every available space the kitchen has to offer.
- Designed to assist with the organisation of your kitchen.
- Available in both left-hand and right-hand applications.
- Designed to suit a variety of cabinet spaces.

- Life-cycle tested to ensure ongoing dependable quality.
- Modern and unique design to enhance and enrich any kitchen's décor.
- Easy to install and assemble.
- High quality chrome surrounds with solid bases on baskets.

Visit our website to find out more about the SIGE Infinity Plus range [www.wilbrad.com.au](http://www.wilbrad.com.au) or call us on **1800 633 507**.

# PULL OUTS

## SIDE MOUNT SOFT CLOSE BOTTLE RACK (LEFT HAND MOUNTED)

- Perfect to organise non-perishables or for use as a bottle rack.
- For use with 150mm external cabinet width.
- Soft-close full extension runners.
- Mounts to door with supplied brackets.
- Includes two chrome baskets with solid bases.
- Includes full extension runners and spacers.
- Chrome finish
- Weight capacity: 12kg

### Technical Details

CODE	▶◻◀	WIDTH	DEPTH	HEIGHT
<b>SWBRS150</b>	150mm	110mm	500mm	520mm



## SIDE MOUNT SOFT CLOSE TOWEL RAIL (LEFT HAND MOUNTED)

- Includes towel rail and basket
- Soft-close runners
- Smooth opening action
- Chrome finish
- Weight capacity: 8kg

### Technical Details

CODE	▶◻◀	WIDTH	DEPTH	HEIGHT
<b>SWTRS150</b>	150mm	110mm	500mm	620mm



## BOTTOM MOUNT SOFT CLOSE BOTTLE RACK

- Available in two sizes - 300mm and 450mm
- Soft-close full extension runners
- Mounts to door with supplied brackets
- Includes two chrome baskets with solid bases
- Chrome finish
- Weight capacity: 30kg

### Technical Details

CODE	▶◻◀	WIDTH	DEPTH	HEIGHT
<b>SWBRB300</b>	300mm	260-268mm	500mm	520mm
<b>SWBRB450</b>	450mm	410-418mm	500mm	520mm

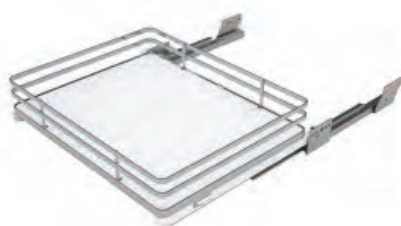




# PANTRY UNITS

## PANTRY DRAWERS

- Available in two sizes
- Allows for customisation - Choose how many drawers you require
- Pull out drawer perfect for use in pantry
- Soft-close, full extension runners
- Chrome basket with solid base
- Weight capacity: 30kg



### Technical Details

CODE	▶◻◀	WIDTH	DEPTH	HEIGHT
SWPD450	450mm	450mm	500mm	90mm
SWPD600	600mm	560 - 568mm	500mm	90mm

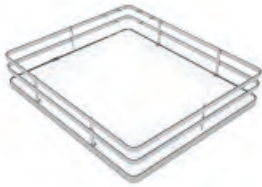




# PANTRY UNITS

## PULL OUT PANTRY

- Includes five baskets
- For use with Pantry frame and runner kit
- Four sizes available
- Chrome finish



### Technical Details

CODE	▶◻◀	WIDTH	DEPTH	HEIGHT
<b>SWPB300</b>	300mm	230mm	440mm	120mm
<b>SMPB400</b>	400mm	330mm	440mm	120mm
<b>SMPB500</b>	500mm	430mm	440mm	120mm
<b>SMPB600</b>	600mm	530mm	440mm	120mm



## PANTRY FRAME

- Adjustable height
- Baskets and runner kit must be purchased separately
- Weight capacity: 120kg
- Chrome finish

### Technical Details

CODE	DEPTH	HEIGHT
<b>SWPFR</b>	505mm	1880-2180mm



## PANTRY RUNNER KIT

- Includes full extension slides and door brackets
- Full extension soft-close runners
- Chrome finish

### Technical Details

CODE	▶◻◀	WEIGHT CAPACITY
<b>SWPRS300</b>	300mm	120kg
<b>SWPRS400</b>	400mm	120kg
<b>SWPRS500</b>	500mm	120kg
<b>SWPRS600</b>	600mm	120kg

## PULL OUT PANTRY KITS

- Kits include five baskets, pantry frame and soft close runner and bracket set

### Technical Details

CODE	▶◻◀	WEIGHT
<b>SPP3</b>	300mm	120kg
<b>SPP4</b>	400mm	120kg
<b>SPP5</b>	500mm	120kg

# PANTRY UNITS

## DOOR FOLLOW PANTRY

- Pantry unit follows door as it is opened
- System comes complete with six baskets, runners and brackets
- Features soft-close full extension runners
- Includes six chrome baskets with solid base
- Weight capacity: 60kg



### Technical Details

CODE	▶◻◀	WIDTH	DEPTH	HEIGHT
<b>SWPDF600</b>	600mm	560mm	500mm	1950 - 2166mm



## PULL OUT PANTRY UNIT

- System comes complete with five baskets, runners and brackets.
- Features soft-close full extension runners.
- Mounts to the door with supplied brackets.
- Includes five chrome baskets with solid base.
- Weight capacity: 80kg



### Technical Details

CODE	▶◻◀	WIDTH	DEPTH	HEIGHT
<b>SWPP200</b>	200mm	150mm	505mm	1880 - 2180mm



# PANTRY UNITS

## TWIN PANTRY

- Swing out tandem unit
- Available in two sizes
- Includes six door mount and six internal baskets
- Features soft-close runners
- Smooth opening action
- Chrome finish
- Weight capacity: 80kg



### Technical Details

CODE	▶◻◀	WIDTH	DEPTH	HEIGHT
SWTPOD450	450mm	410mm	470mm	1800mm
SWTPOD600	600mm	560mm	470mm	1800mm



## SMALL TWIN PANTRY

- Suitable for short pantry applications
- Includes four door mount and four internal baskets
- Features soft-close runners
- Smooth opening action
- Chrome baskets with solid base
- Weight capacity: 50kg



### Technical Details

CODE	▶◻◀	WIDTH	DEPTH	HEIGHT
SWSTPO450	450mm	410mm	470mm	1215mm
SWSTPO500	500mm	460mm	470mm	1215mm
SWSTPO600	600mm	560mm	470mm	1215mm







# PANTRY UNITS

## ROTATING PANTRY

- Unit rotates as door opens
- System comes complete with five baskets, runners and brackets.
- Mounts to door front with brackets provided
- Features soft-close full extension runners
- Smooth opening action
- Chrome finish
- Weight capacity: 120kg

### Technical Details

CODE	►◻◄	WIDTH	DEPTH	HEIGHT
<b>SWRP400</b>	400mm	300mm	505mm	1950 - 2166mm





# CORNER UNITS

## 3/4 CAROUSEL SHELF

- Includes shelf only
- Chrome shelf with solid base
- Can be retrofitted to existing shelves
- Sold as a single carousel shelf
- Weight capacity: 30kg per shelf



### Technical Details

CODE	►◻◄	WIDTH	DEPTH	HEIGHT
<b>SWCARS800</b>	800mm	700mm	700mm	110mm
<b>SWCARS900</b>	900mm	800mm	800mm	110mm



## KIDNEY SHELVES

- Designed to be fit onto existing shelves
- Available in left-hand and right-hand application
- Includes two shelves
- Chrome finish. White melamine base with chrome surround.
- Weight Capacity: 20kg per shelf.



### Technical Details

CODE	APPLICATION	►◻◄	WIDTH	DEPTH	HEIGHT
<b>SWKS900L</b>	Left Hand	900mm	414mm	500mm	650 - 750mm
<b>SWKS900R</b>	Right Hand	900mm	414mm	500mm	650 - 750mm



# CORNER UNITS

## HALF MOON CORNER UNIT

- Consists of two rotating shelves
- Chrome finish: White melamine base with chrome surround
- Weight capacity: 20kg



### Technical Details

CODE	►◻◄	WIDTH	DEPTH	HEIGHT
<b>SWHMCU</b>	800mm	760mm	390mm	510mm



## CORNER PULL OUT

- Includes two door mounted baskets and two internal baskets
- Available in left-hand and right-hand application
- Soft-open and close action
- Chrome finish: White melamine base with chrome surround.
- Weight capacity (Internal): 20kg
- Weight capacity (Door Mounted): 15kg



### Technical Details

CODE	APPLICATION	►◻◄	WIDTH	DEPTH	HEIGHT
<b>SW4CP900L</b>	Left Hand	900mm	860mm	505mm	600 - 850mm
<b>SW4CP900R</b>	Right Hand	900mm	860mm	505mm	600 - 850mm



# LAUNDRY BASKETS

- Includes Blum 30kg TANDEM plus runners
- Orion Grey finish
- Made in Italy
- Easy to install
- Life-cycle tested to ensure ongoing and dependable quality
- Suits commercial and residential spaces
- Minimum height: 630mm
- Minimum width: 450mm
- Minimum depth: 515mm



## Technical Details

CODE	▶◻◀	INTERNAL WIDTH W/ FRAME	MIN. DEPTH	HEIGHT	CAPACITY
SWL4560	450mm	370mm	515mm	566mm	60L
SWL6090	600mm	520mm	515mm	630mm	90L





---

Contact us or visit our website for more information on any of our products.

**Online Store**

[www.wilbrad.com.au](http://www.wilbrad.com.au)

**Phone**

1800 633 507

---

**VIC**

94 Bell Street  
Preston VIC 3072

**NSW**

Unit 4, 3 Basalt Road  
Greystanes NSW 2145

**WA**

19 Christable Way  
Landsdale WA 6065

**QLD**

105 Corymbia Place  
Parkinson QLD 4115

**SA**

79 Frederick St  
Welland SA 5007

**TAS**

Ph: 1800 633 507



@wilsonandbradley