

Wardrobes

Organisation Meets Design



wilbrad.com.au

40
YEARS OF
SERVICE

**WILSON
BRADLEY &**

SERVICE & CIVILITY

Our wardrobe range is better than ever.

The range includes a huge variety of practical and striking solutions.

Wardrobes are evolving into much more than they once were, with consumers demanding versatility and style alongside useability.

Wilson & Bradley's wardrobe range allows you to achieve both.

SHOE ORGANISATION



WSSRW8

SHOE RACK

- Soft Close Runners
- Aluminium Frame
- Chrome Basket
- Frame pulls out to full extension for easy access to stored shoes
- Weight Capacity 30kg

Code	Size	Finish
WSSRB6	564 x 477 x 170	Black
WSSRB8	764 x 477 x 170	Black
WSSRB9	864 x 477 x 170	Black
WSSRW6	564 x 477 x 170	Antique White
WSSRW8	764 x 477 x 170	Antique White
WSSRW9	864 x 477 x 170	Antique White

SHOE FENCES

- Chrome
- Prevents shoes sliding from shelves

Code	Size
SHF400	400 x 35
SHF500	500 x 35
SHF600	600 x 35
SHF700	700 x 35
SHF800	800 x 35



SHF600

CLOTHES RACKS



WSCR8

- Single Extension
- Aluminium & Steel
- For under shelf application
- Weight Capacity 10kg

Code	Size	Finish
WSCR8	460 x 165 x 85	Black
WSCRW	460 x 165 x 85	Antique White

TIE & BELT RACKS



WSTBW

- Single Extension
- Side Mount
- Aluminium & Steel
- Weight Capacity 10kg

Code	Size	Finish
WSTBB	460 x 175 x 85	Black
WSTBW	460 x 175 x 85	Antique White

PANT RACKS



WSPRB9

PANT RACK

- Soft Close Runners
- Aluminium Frame and Bars
- Weight Capacity 30kg

Code	Size	Finish
WSPRB6	564 x 477 x 80	Black
WSPRB8	764 x 477 x 80	Black
WSPRB9	864 x 477 x 80	Black
WSPRW6	564 x 477 x 80	Antique White
WSPRW8	764 x 477 x 80	Antique White
WSPRW9	864 x 477 x 80	Antique White



WSPRNSW8

NON SLIP PANT RACK

- Soft Close Runners
- Aluminium Frame
- With Plastic Accessory Tray
- Steel Rack
- Weight Capacity 30kg

Code	Size	Finish
WSPRNSB6	564 x 477 x 130	Black
WSPRNSB8	764 x 477 x 130	Black
WSPRNSB9	864 x 477 x 130	Black
WSPRNSW6	564 x 477 x 130	Antique White
WSPRNSW8	764 x 477 x 130	Antique White
WSPRNSW9	864 x 477 x 130	Antique White

ACCESSORY BOXES



WSABW6

- Soft Close Runners
- Aluminium Frame
- Grey Velvet Boxes
- Weight Capacity 30kg

Code	Size	Finish
WSABB6	564 x 477 x 100	Black
WSABB8	764 x 477 x 100	Black
WSABB9	864 x 477 x 100	Black
WSABW6	564 x 477 x 100	Antique White
WSABW8	764 x 477 x 100	Antique White
WSABW9	864 x 477 x 100	Antique White

STORAGE BASKETS



WSSBB9

CHROME BASKET

- Soft Close Runners
- Aluminium frame
- Chrome basket
- Weight Capacity 30kg

Code	Size	Finish
WSSBB6	564 x 477 x 168	Black
WSSBB8	764 x 477 x 168	Black
WSSBB9	864 x 477 x 168	Black
WSSBW6	564 x 477 x 168	Antique White
WSSBW8	764 x 477 x 168	Antique White
WSSBW9	864 x 477 x 168	Antique White



WSBWB6

WOVEN BASKET

- Soft Close Runners
- Aluminium Frame
- Light Tan PVC Basket
- Weight Capacity 30kg

Code	Size	Finish
WSBWB6	564 x 477 x 218	Black
WSBWB8	764 x 477 x 218	Black
WSBWB9	864 x 477 x 218	Black

MIRRORS



WSMIRB

PULL OUT MIRROR

- Chrome Wire
- Plastic Trays
- Includes Spacers, Side Mounting Hinges and Brackets

Code	Size	Finish
WSMIRB	1171 x 460 x 250	Matte Natural
WSMIRW	1171 x 460 x 250	Antique White



WSPMIRB

PIVOTING MIRROR

- 90 Degree Pivot

Code	Size	Finish
WSPMIRB	1203 x 403 x 61	Matte Natural
WSPMIRW	1203 x 403 x 61	Antique White

WARDROBE LIGHTING

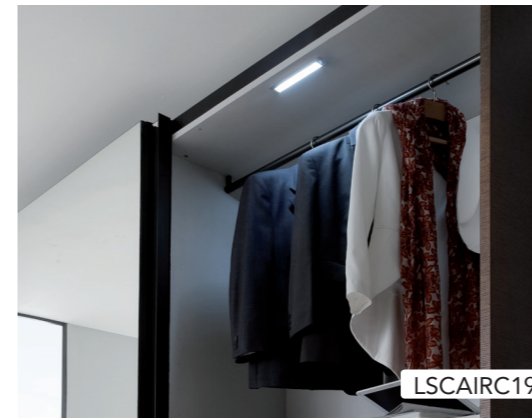


LSFREC5

FREE IR SENSOR

- Combined wardrobe hanging rail with high efficiency LED lighting
- Anodised aluminium finish
- Must use MINI MOTION SENSOR if using as a sensor light
- Cool white contrast

Code	Dimension
LSFREC5	540mm
LSFREC7	750mm
LSFREC8	870mm



LSCAIRC19

CAPRI IR SENSOR

- Aluminium recessed high-efficiency LED lamp with integrated motion sensor
- Shape of light allows for a better spread of light
- Ideal for use inside cabinets
- Anodised aluminium finish
- Cool white contrast

Code	Dimension
LSCAIRC19	195mm
LSCAIRC5	595mm





LSSUPEM27

SUPERLIGHT EMOTION

- Recessed uniquely designed Spotlight
- High quality aluminium housing
- Emotion technology allows light to be adjusted from warm white to cool white
- Must be used in conjunction with either L & S dimmer or remote
- Available in white or brushed steel look
- Must only be used with 30W driver unit

Code	Finish
LSSUPEM09	White
LSSUPEM27	Brushed Steel Look



 Hole Dimension	58mm
 Dimension	70mm



WARDROBE LIFT SYSTEM



LIFT 700

Hydraulic lifting mechanism allows access to previously out of reach areas of a wardrobe

- 15kg Weight Capacity
- Adjustable from 750mm – 1150mm

Code	Min Internal Width	Max Internal Width
WL70023	750mm	1150mm

EXTRACTABLE RACKS



EXTRACTABLE BELT RACK

Code	Length of Slide
WRBELT	470mm

EXTRACTABLE TIE RACK

Code	Length of Slide
WRTIE	470mm

WARDROBE TUBING & ACCESSORIES



OVAL TUBE

Code	Length	Finish
AT09	4000mm	White
AT21	4000mm	Polished Chrome
AT23	4000mm	Polished Natural Aluminium

FLANGES

Code	Application	Finish
TS83390	Screw in	Nickel Plated
TS83391	knock in - system 32	Nickel Plated

CENTRE RAIL

Code	Finish
TCH83399	Chrome

WARDROBE TUBING & ACCESSORIES continued



PVC FLANGES

Code	Size	Finish
ATB15	16mm	PVC for use with AT09 & AT21
ATB25	25mm	PVC for use with AT23



END PILLARS

Code	Finish
TEP83398	Chrome



ROUND TUBE

Code	Diameter	Length	Finish
CT193606	19mm	3600mm	Chrome on steel
CT253606	25mm	3600mm	Chrome on steel



FLANGES

Code	Size	Finish
BFF19	19mm	Chrome
BFF25	25mm	Chrome



CENTRE PILLARS

Code	Size	Finish
BFC19	19mm	Chrome
BFC25	25mm	Chrome

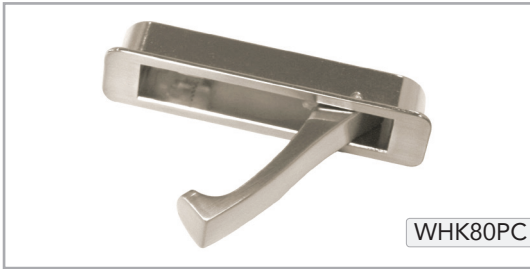


END PILLARS

Code	Size	Finish
BFP19	19mm	Chrome
BFP25	25mm	Chrome

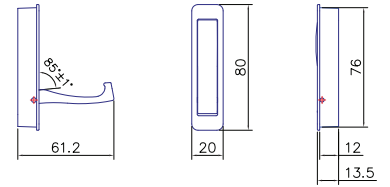
Wardrobe Hooks

FOLD DOWN WARDROBE HOOKS



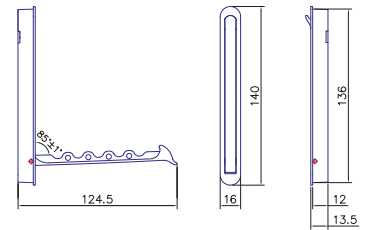
FOLD DOWN WARDROBE HOOKS

Code	Finish
WHK80PC	Polished Chrome
WHK80SS	Stainless Steel
WHK80WH	White



FOLD DOWN WARDROBE HOOKS

Code	Finish
WHK140PC	Polished Chrome
WHK140SS	Stainless Steel
WHK140WH	White

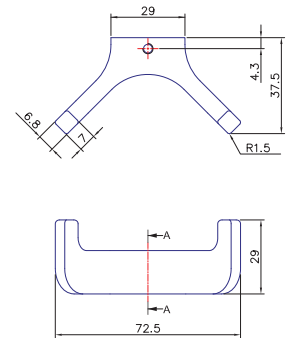


CURVED WARDROBE HOOKS



CURVED WARDROBE HOOKS

Code	Finish
WHKCDN	Dull Nickel
WHKCPC	Polished Chrome

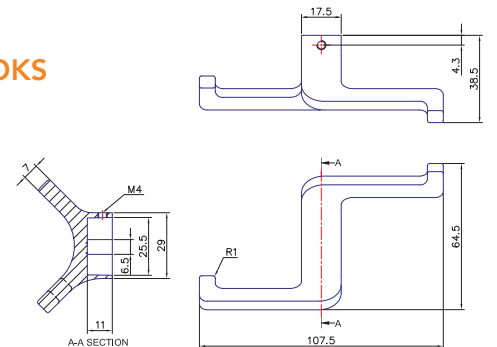


S STYLE WARDROBE HOOKS



S STYLE WARDROBE HOOKS

Code	Finish
WHKSDN	Dull Nickel
WHKSPC	Polished Chrome



View installation videos at www.wilbrad.com.au

40
YEARS OF
SERVICE



Melbourne

94 Bell Street
Preston VIC 3072
P. 03 9495 8900
F. 03 9416 8878

Sydney

Unit 4, 3 Basalt Road
Greystanes NSW 2145
P. 02 8863 2700
F. 02 9636 8822

Hobart

sales@wilbrad.com.au

Brisbane

2/60 Enterprise Place
Tingalpa QLD 4173
P. 07 3890 8611
F. 07 3890 3375

Perth

43 Prosperity Ave
Wangara WA 6065
P. 08 9303 2644
F. 08 9303 9788

Adelaide

41 Weaver Street
Edwardstown SA 5039
P. 08 8276 3800
F. 08 8276 3755