



CABLOXX

Greater design freedom for lockable furniture

www.blum.com

 **blum**[®]

An added touch for high-quality furniture

Lockable furniture can be used to secure a wide range of items, including valuable personal items, confidential documents and valuable display products. CABLOXX adds an extra layer of security to premium furniture, whilst offering plenty of design freedom.

 **blum**



Different ideas, one solution

CABLOXX extends the range of application options for LEGRABOX, TANDEMBOX, MOVENTO and TANDEM. A wide range of cabinet widths and heights can be implemented with CABLOXX, providing greater design options for lockable furniture applications throughout the home.

blum

Combine with motion technologies

CABLOXX is compatible with Blum's motion technologies – BLUMOTION for silent and effortless closing, SERVO-DRIVE electrical opening support system and TIP-ON BLUMOTION mechanical opening and soft-closing support system.

Different colour variants

The front locking bracket is available in three colour variants of Terra Black, Orion Grey and Silk White, which can be coordinated to the finish of the drawer side profile.



Protection against unauthorised access

CABLOXX is the right solution for items that need to be stored securely and protected against unauthorised access.

blum



Reliable child safety

A lockable pull-out is an ideal solution if a child safety latch is required on furniture throughout the home. Possible sources of danger such as cleaning products and medication can be stored safely away from children with CABLOXX.

Tip protection for free-standing furniture

The integrated tip protection of CABLOXX makes using furniture even safer. With a pull-out lock installed, only one pull-out can open at a time, which takes the options for free-standing furniture design to the next level.

blum





High flexibility

CABLOXX offers a high degree of design freedom thanks to the cut-to-size locking bar; the spacer and locking mechanism unit can be positioned where required.



No impact on pull-out system

CABLOXX has no impact on the assembly of the corresponding pull-out system, as the front locking bracket is not fixed to the drawer side and is fixed to the drawer or pull-out front.



Cutting to size template

To support the manufacturing process for CABLOXX, templates are available to assist with assembly and installation.

Proven convenience during assembly

CABLOXX can be used with standard assembly dimensions for Blum pull-outs and drawers. Height, side, tilt and depth adjustments remain fully functional and easy to use thanks to the flexibility of CABLOXX.



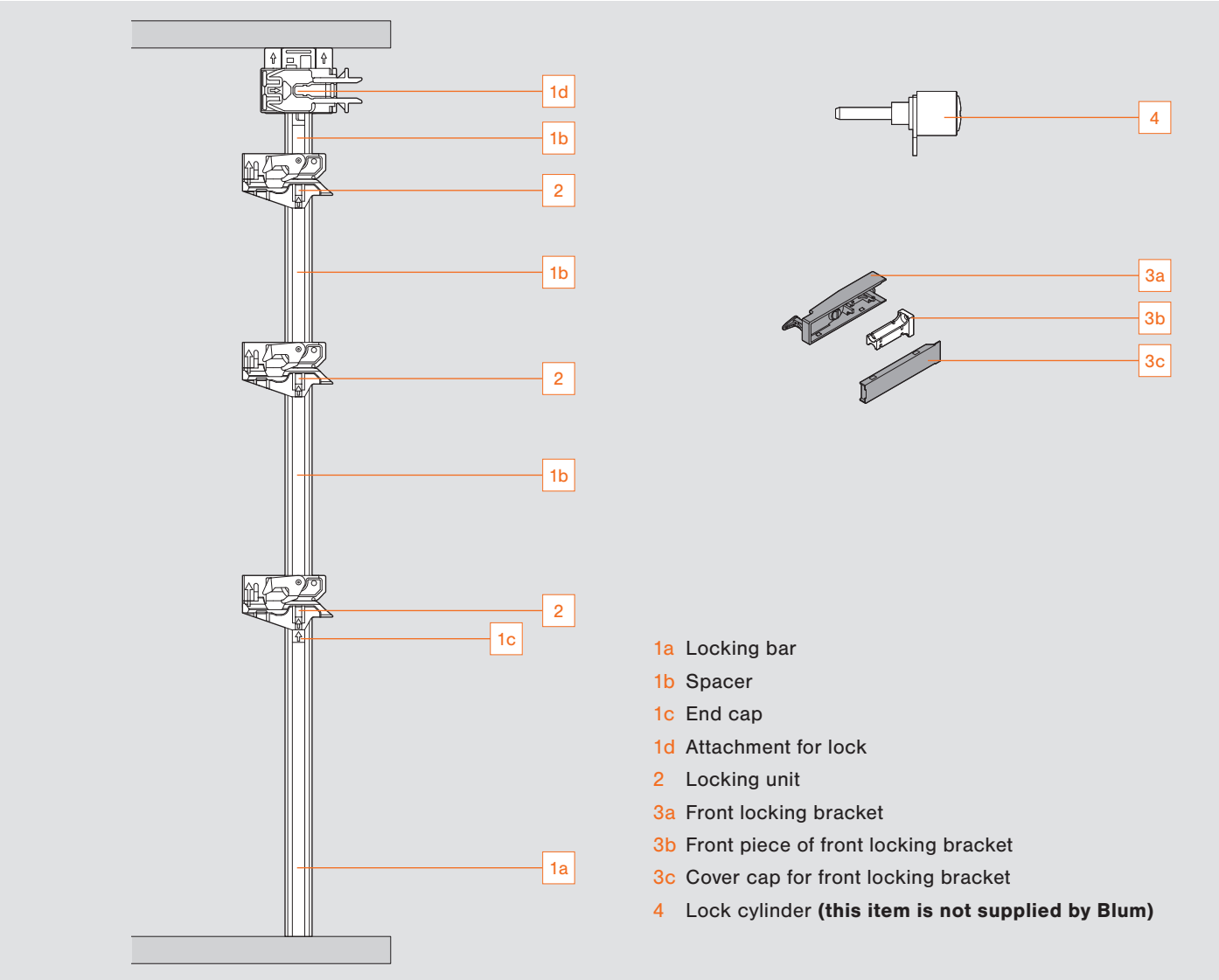
Product



Description

- CABLOXX is a compact and straightforward package that provides an extra layer of security while offering greater freedom of design
- System-independent solution – can be combined with various Box and Runner systems
- High flexibility – can be used for various cabinet dimensions
- Up to five pull-outs can be used per locking bar
- CABLOXX is compatible with BLUMOTION, SERVO-DRIVE and TIP-ON BLUMOTION
- Unrestricted adjustment

Component overview

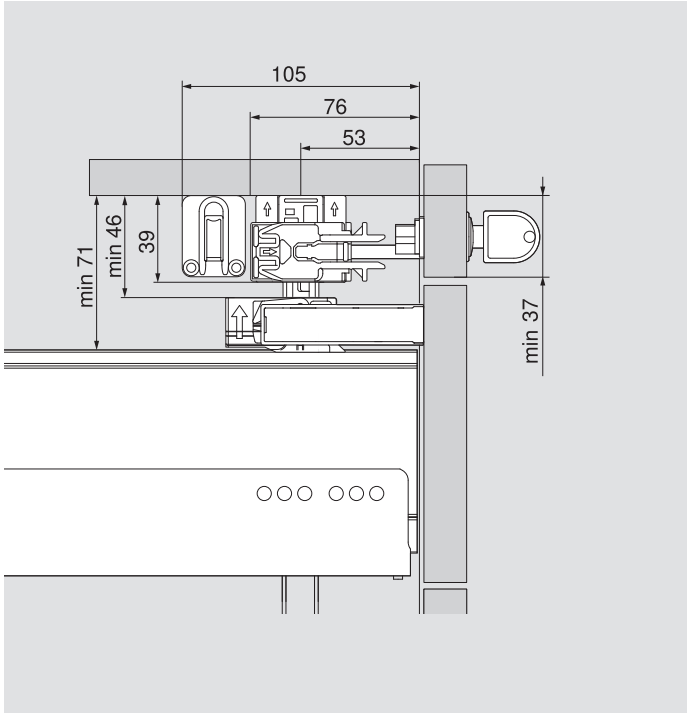


Order specification

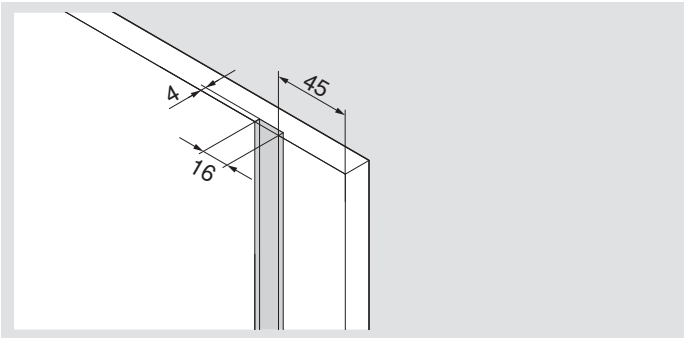
CABLOXX components		
1	Locking bar set (can be cut-to-size)	
	Up to cabinet height	
	800 mm	Z80S0760
	Consisting of:	
	1a 1x locking bar, symmetrical	
	1b 1x spacer for cutting to size	
	1c 1x end cap	
	1d 1x attachment for the lock	
	1x drilling template for the end cap	
	1x installation instructions	
	Locking bar cutting: Internal height LH - 2 mm	
2	Locking units	
	Right	Z80.000V
	Left	Z80.000V
3	Front locking bracket set	
	SW-M Silk White Matt	Z80.000S
	OG-M Orion Grey Matt	Z80.000S
	TS-M Terra Black Matt	Z80.000S
	Consisting of:	
	3a 1x front locking bracket	
	3b 1x front piece of front locking bracket	
	3c 1x cover cap for front locking bracket	

Synchronisation (recommended for cabinet widths >600mm)		
	Synchronisation set*	Z80V000A
	Consisting of:	
	2x attachments for synchronisation (left/right)	
	2x levers for synchronisation	
	* When synchronisation is used, two locking bar sets are required, along with double the front locking bracket and locking unit.	
	Synchronisation linkage*	
	For cutting to size	Z80V1163W
	Cutting: internal cabinet width LW - 7 mm	
	* When synchronisation is used, two locking bar sets are required, along with double the front locking bracket and locking unit.	
Assembly devices		
	Cutting-to-size template	
	Cutting locking bar to size, spacers and synchronisation linkage.	
	Drilling holes for end cap and synchronisation attachment.	
		65.0801
	Positioning template for front locking bracket	
	for LEGRABOX	65.0807
	for TANDEMBOX	65.0803

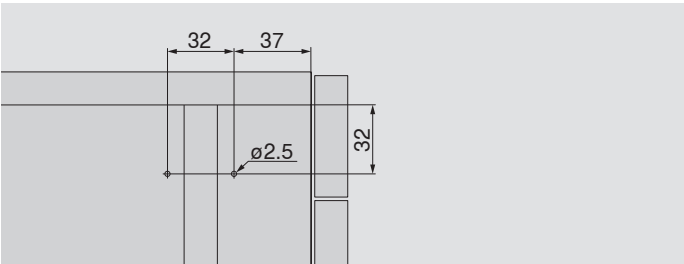
Space requirement for locking bar and synchronisation



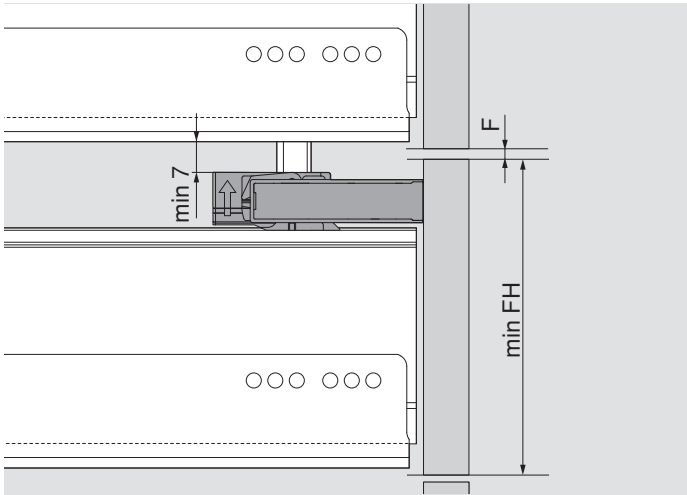
Locking bar groove dimension



Drilling distance for locking bar



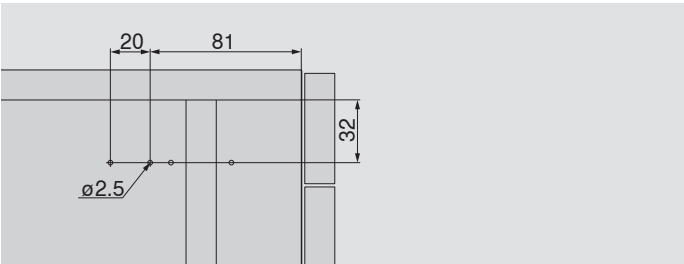
Min. front heights



Minimum front height [min. FH]	Height							
	N antaro	M	K	B	C	D antaro	D intivo	F
TANDEMBOX	111	126	–	–	215	247	240	–
LEGRABOX	–	132	170	–	221	–	–	285

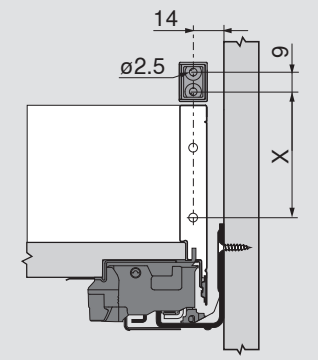
With a gap [F] of 2 mm

Optional drilling distance for synchronisation attachment



Drilling distance for front piece of front locking bracket

LEGRABOX

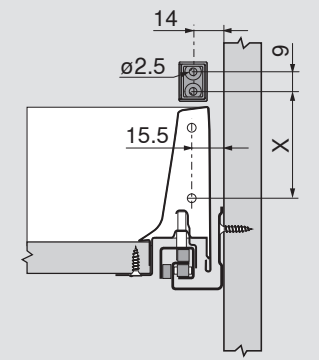


Front piece of front locking bracket to be pre-drilled Ø 2.5 mm

	Height			
LEGRABOX	M	K	C	F
[X] mm	59	97	148	212

AMBIA-LINE
Cross gallery not taken into account (+ 4 mm)

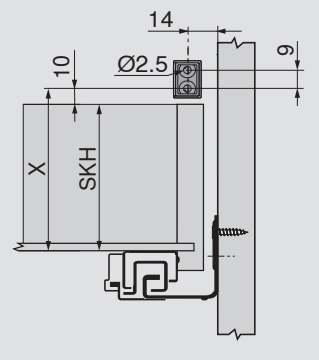
TANDEMBOX



Front piece of front locking bracket to be pre-drilled Ø 2.5 mm

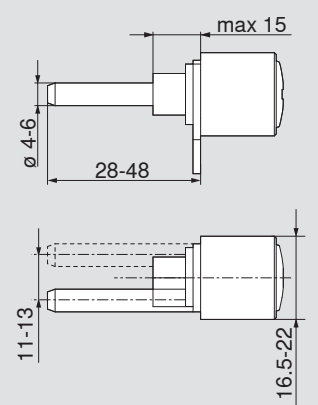
	Height				
TANDEMBOX	N antaro	M	C	D antaro	D intivo
[X] mm	57	57	146	178	171

Wooden drawer

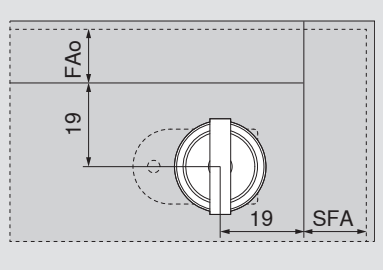


SKH Drawer height

Cylinder specifications

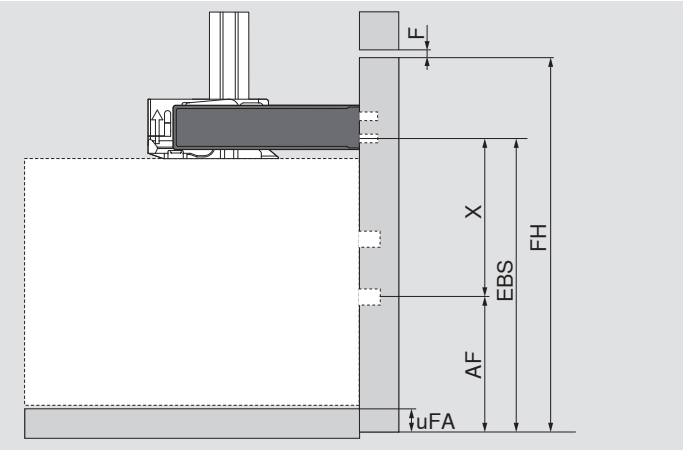


Cylinder drilling distance



FAo Upper front overlay
SFA Front overlay of the side panel

Legend



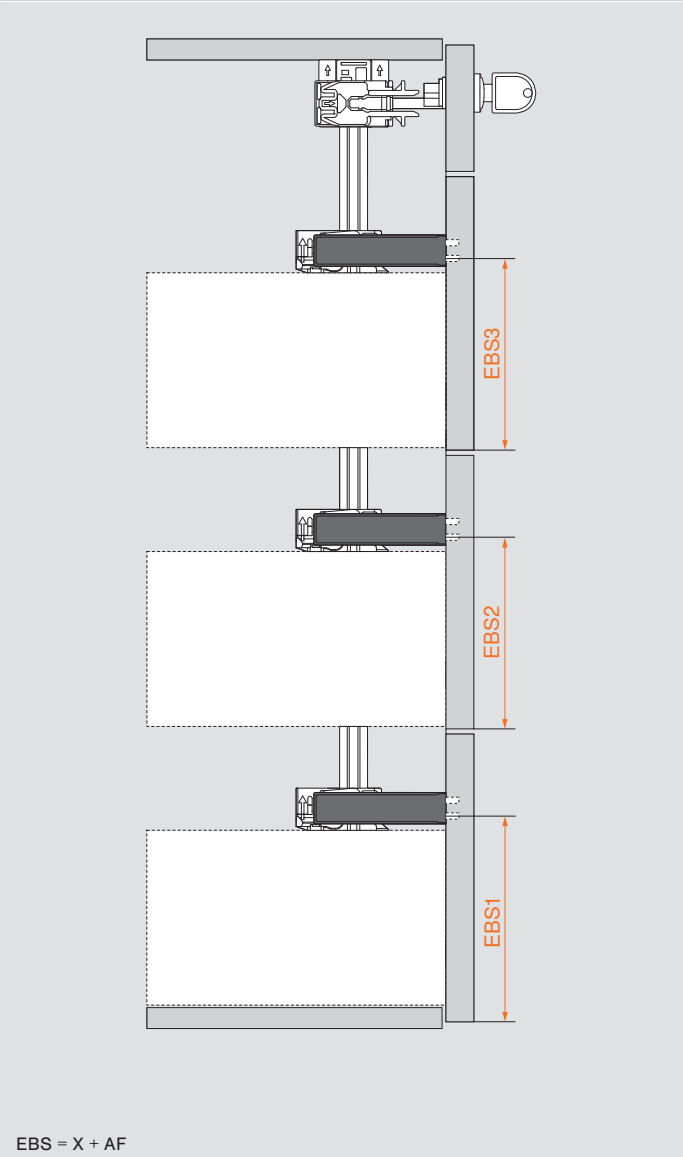
Product configurator spacing calculation

> Spacer calculation
www.blum.com/configurator

- FH Front height
- EBS Installation dimensions for front locking bracket
- X Drilling distance for front locking bracket (page 15)
- AF Fixing dimensions for front fixing bracket
- uFA Bottom overlay of front
- F Gap

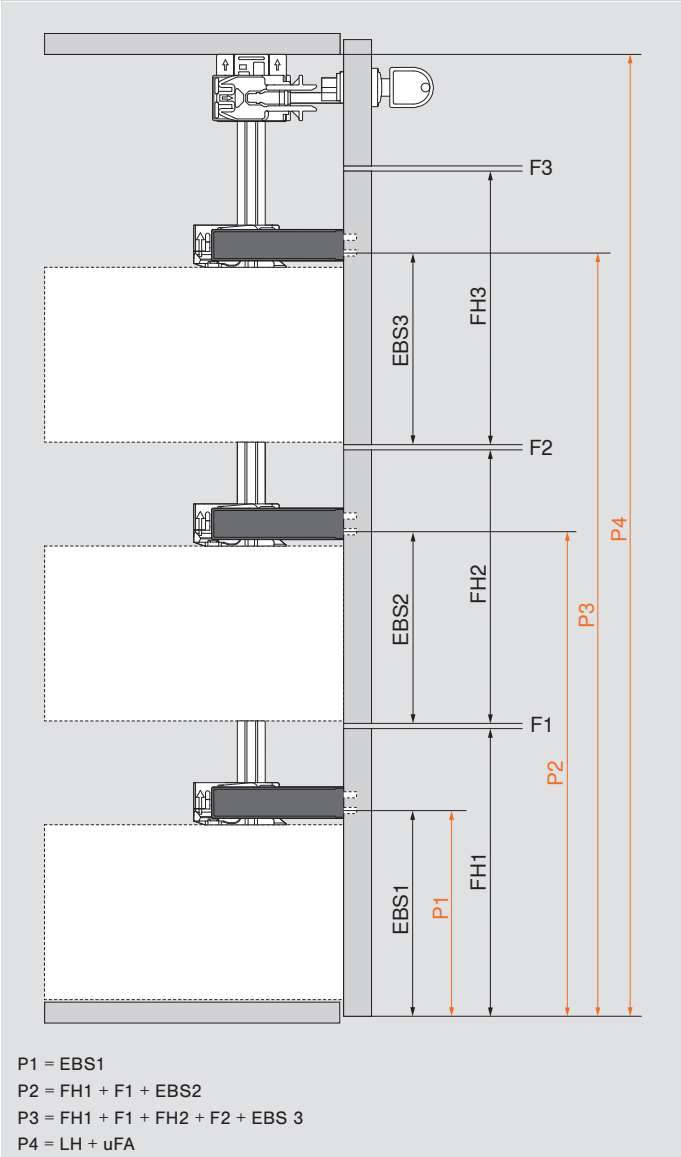
Step 1

Calculate installation dimensions for front locking bracket (EBS)



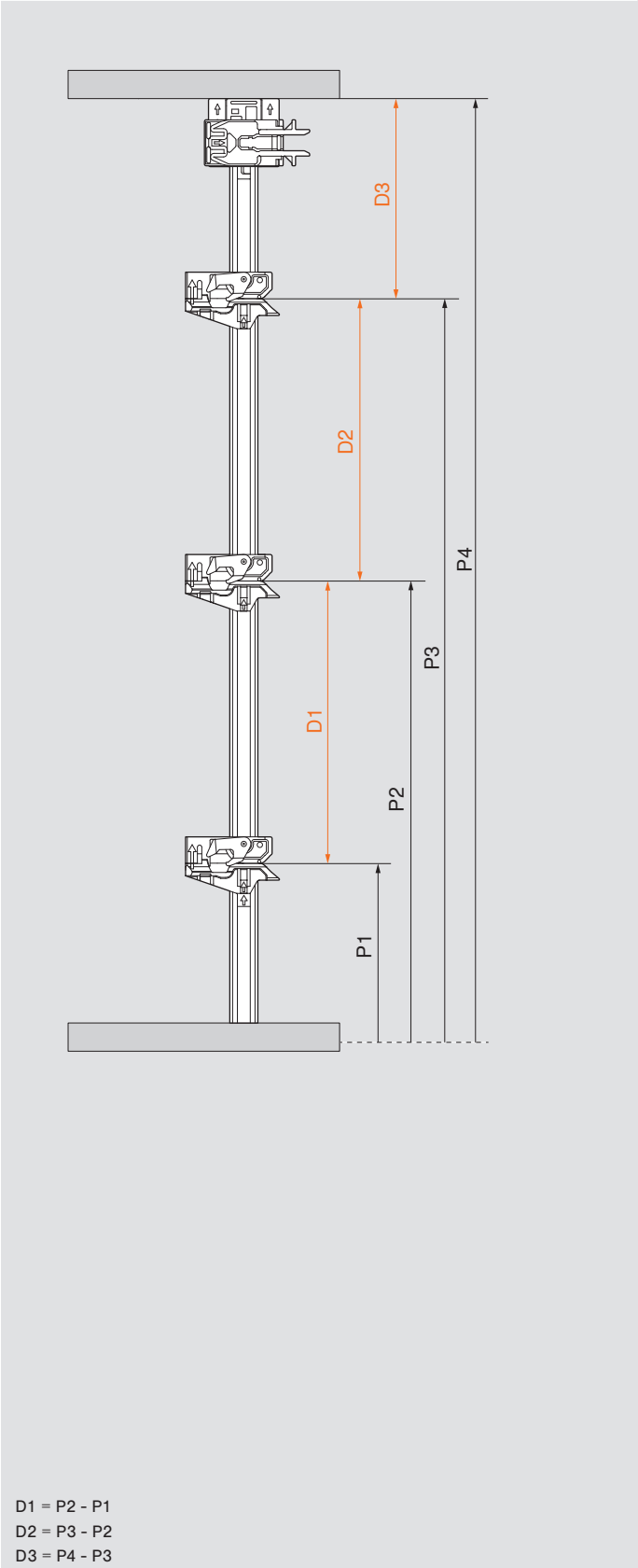
Step 2

Calculate position of front locking bracket (P) in the cabinet



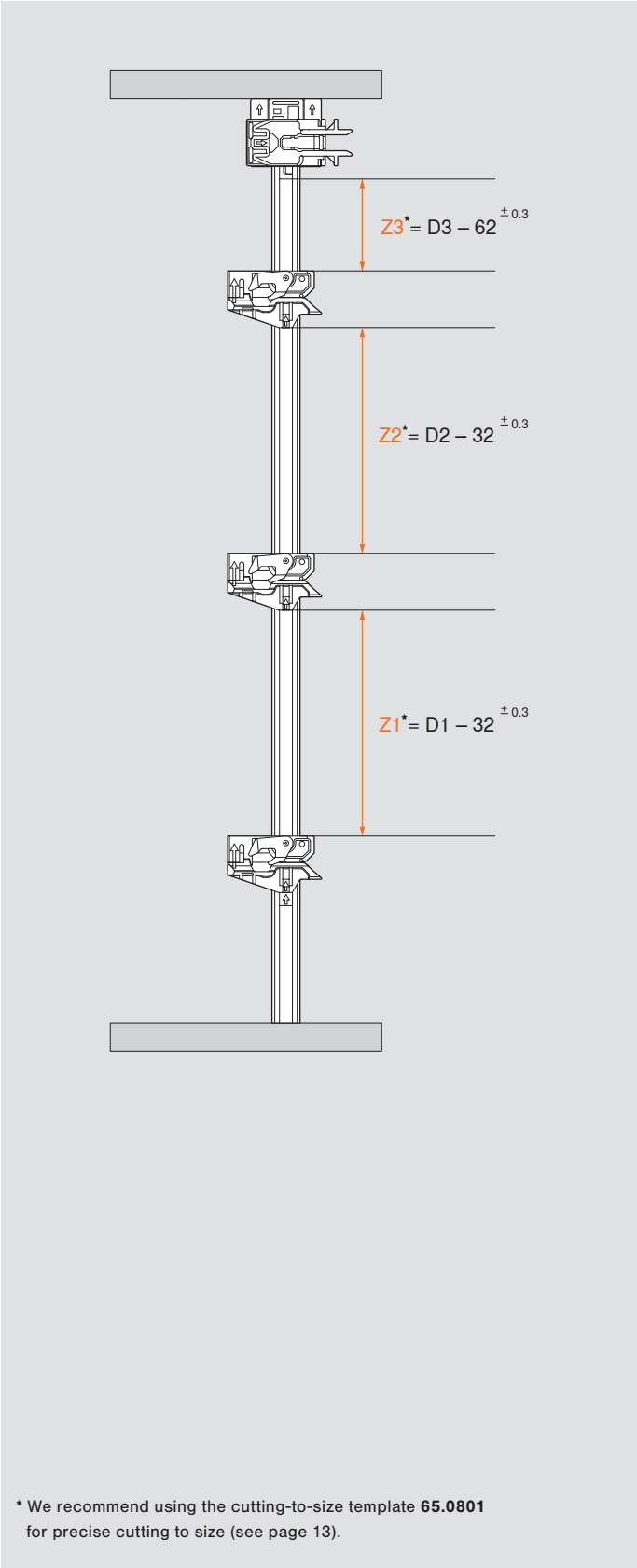
Step 3

Calculate spacing (D) between locking units



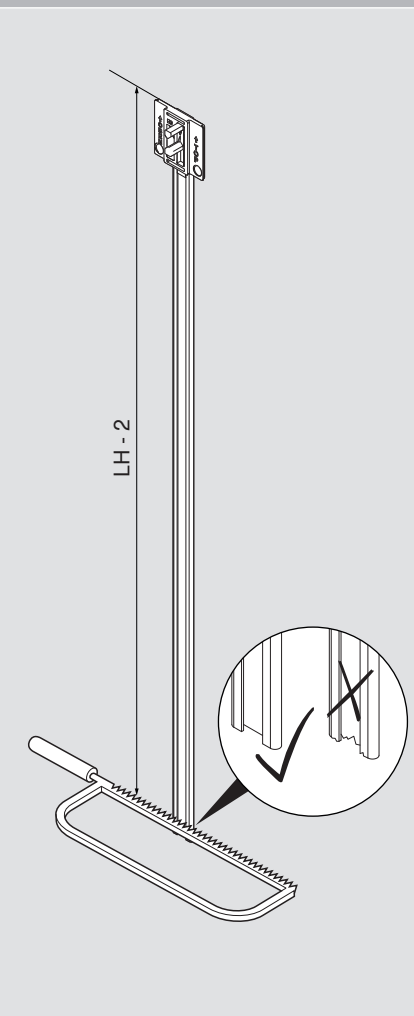
Step 4

Calculate cutting dimension (Z)

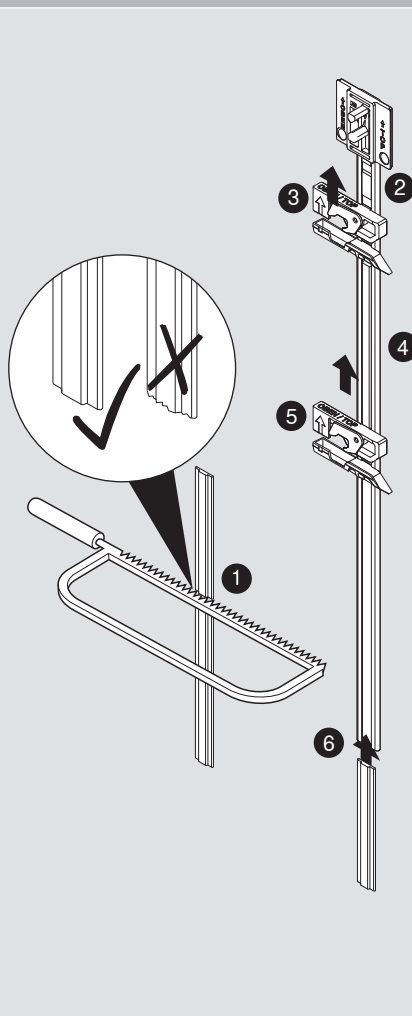


Locking bar, locking unit and cylinder

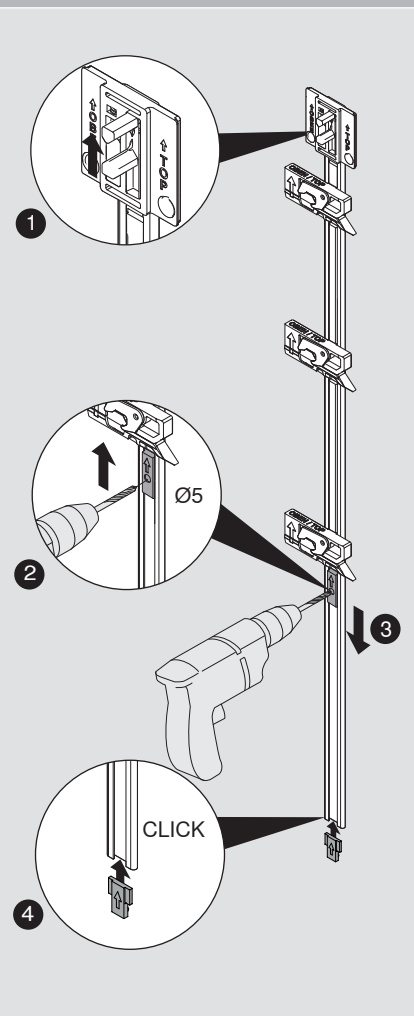
Cut locking bar to size*



Cut spacer to size*, attach locking unit

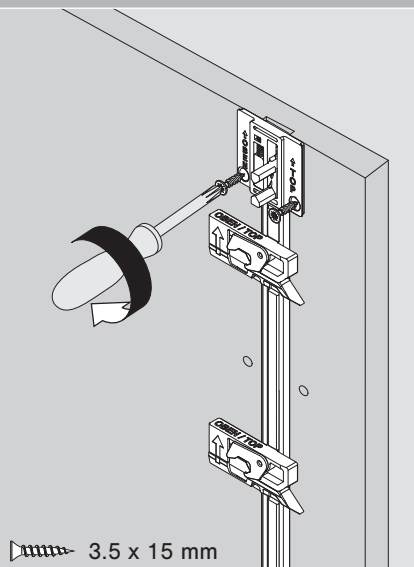


Fix end cap

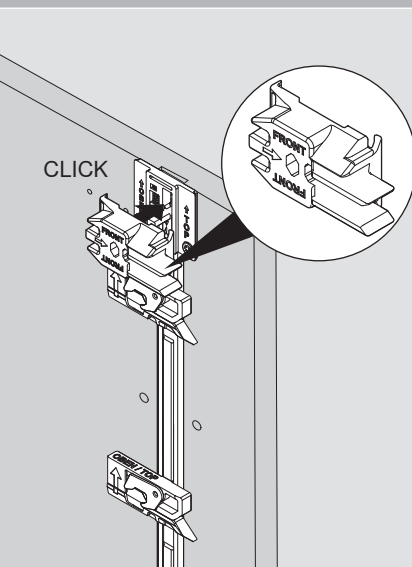


* We recommend using the cutting-to-size template 65.0801 for precise cutting to size (see page 13).

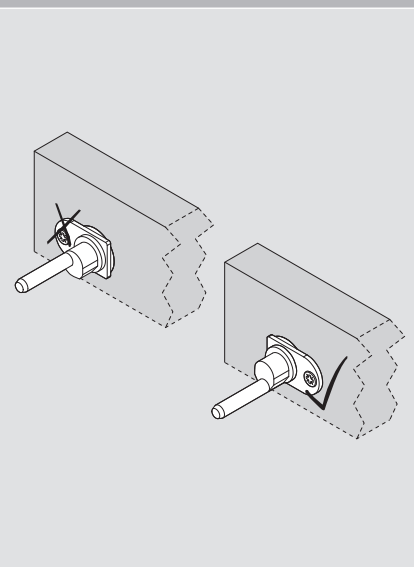
Fix locking bar



Fix attachment for lock

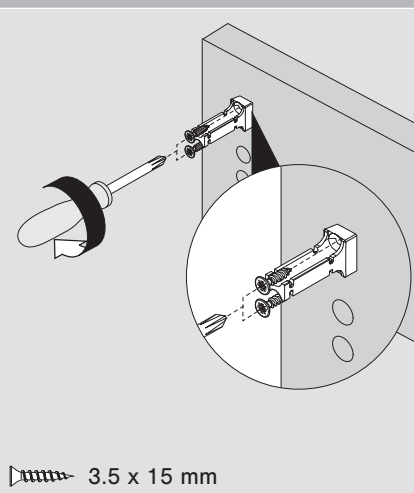


Install the cylinder

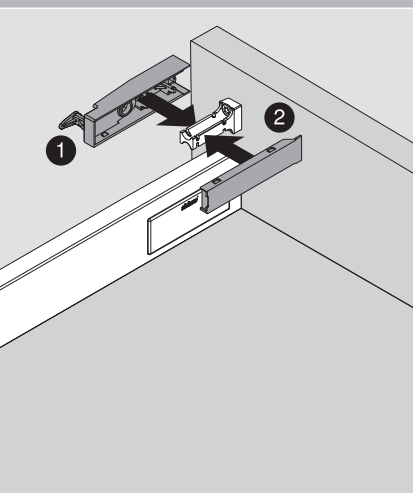


Front locking bracket and synchronisation

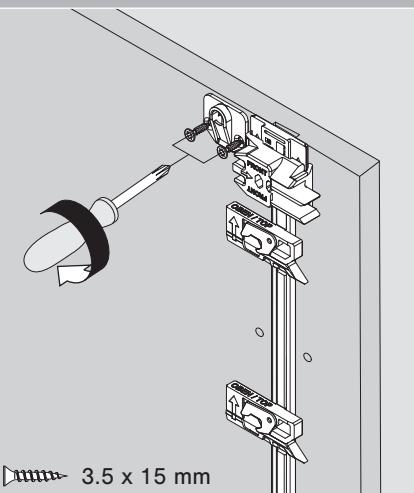
Front piece of front locking bracket



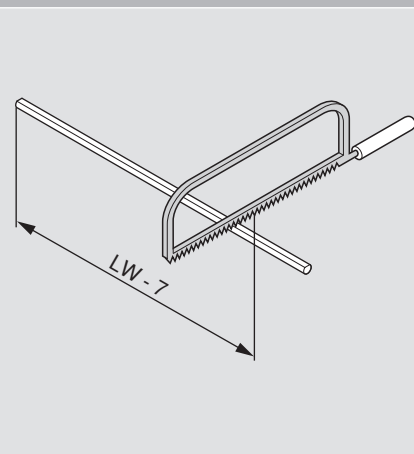
Front locking bracket and cover cap



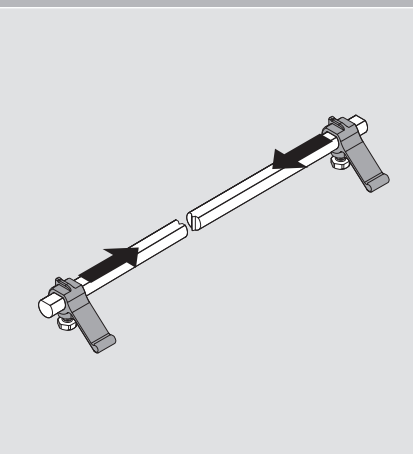
Attachment for synchronisation



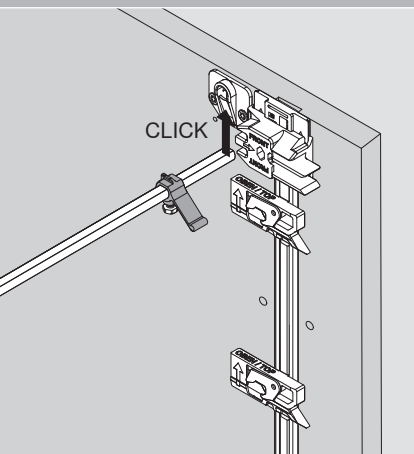
Cutting linkage for synchronisation*



Slide on synchronisation levers

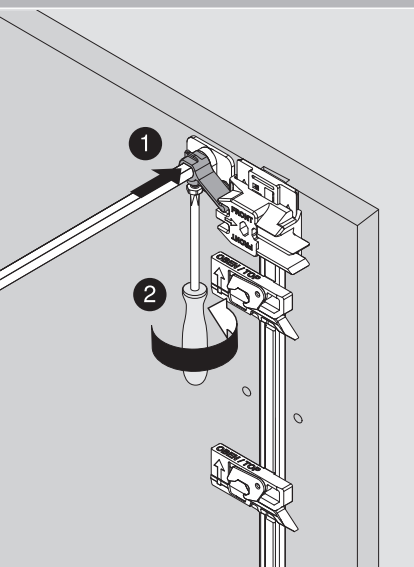


Insert linkage for synchronisation

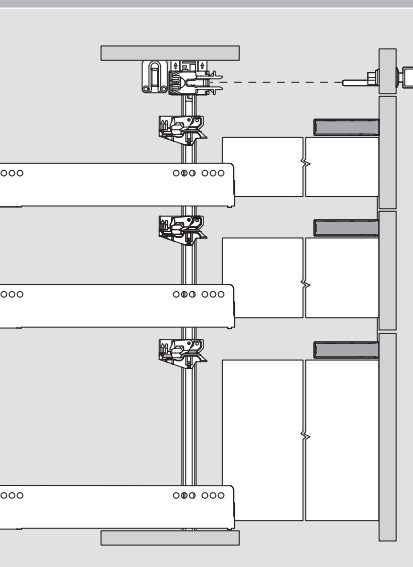


* We recommend using the cutting-to-size template 65.0801 for precise cutting to size (see page 13).

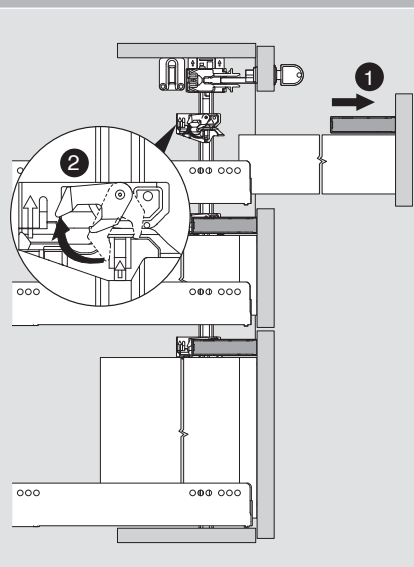
Fasten synchronisation levers



Assembling pull-outs/drawers



Removing pull-outs/drawers



About Blum

Founded over 60 years ago by Julius Blum, today Blum is an internationally active family-owned company. Blum is trusted and renowned worldwide for designing a comprehensive range of high quality, industry leading products that significantly enhance user convenience and ergonomics in the kitchen and throughout the home. That's why we make every effort to perfect the motion of our lift, hinge, box and runner systems.



Design is more than an attractive appearance

Form, function and the focus on perfecting motion are and have always been firmly interlinked at Blum. This means that Blum products turn the use of high-quality furniture into a true experience and offer the ideal fitting solution for every home. Blum incorporates current design trends, personal preferences and functional furniture use. Blum fittings are internationally recognised for their sophisticated design and functional excellence.



Quality for the lifetime of the furniture

For over 60 years, quality has been the highest principle for the development and manufacture of Blum products. Our fittings exemplify quality with their well-thought-out function and durability, engineered to provide problem free use for the lifetime of the furniture. We achieve this by using the strictest internal guidelines and rigorous testing that form the basis of our ISO9001 Quality Management System.



Innovation for high living comfort

We want our fitting solutions to be innovative and make everyday kitchen use easier. That's why our developments are based on findings from requirements research and input from our customers. Blum is one of the largest patent applicants in Austria and has more than 1,000 registered trademarks. CLIP, tool free assembly, TANDEM technology, MOVENTO technology, LEGRABOX Box system, BLUMOTION soft close, SERVO-DRIVE electrical motion support system and TIP-ON BLUMOTION mechanical motion support system are all innovations by Blum and milestones in the furniture manufacturing industry.

Our contribution to the environment

Blum strives to minimise its environmental impact with environmental protection being an integral part of everything we do. We use environmentally friendly processes, use raw materials intelligently and save energy wherever we can. Our commitment to environmental protection is internationally recognised and rewarded. We endeavour to maintain and are always looking to improve our environmental management systems.





ISO 50001

Certified Energy
System



ISO 9001

Certified Quality
System



ISO 14001

Certified Environmental
System

**Blum Showrooms
Sydney (Head Office)**

10 Blackbird Close
Len Waters Estate NSW 2170
Ph: 02 9612 5400

Adelaide

179 Railway Terrace
Mile End SA 5031
Ph: 08 8118 6070

Brisbane

6/39-45 Compton Road
Underwood QLD 4119
Ph: 07 3135 9490

Melbourne

245 Ferntree Gully Road
Mount Waverley VIC 3149
Ph: 03 9982 1720

Perth

3/50 Howe Street
Osborne Park WA 6916
Ph: 08 6467 0110

Place distributor or company contact details here.

Blum Australia Pty. Ltd.
P.O. Box 1615
Green Valley NSW 2168
Toll Free: 1800 179 186
E-Mail: info.au@blum.com

